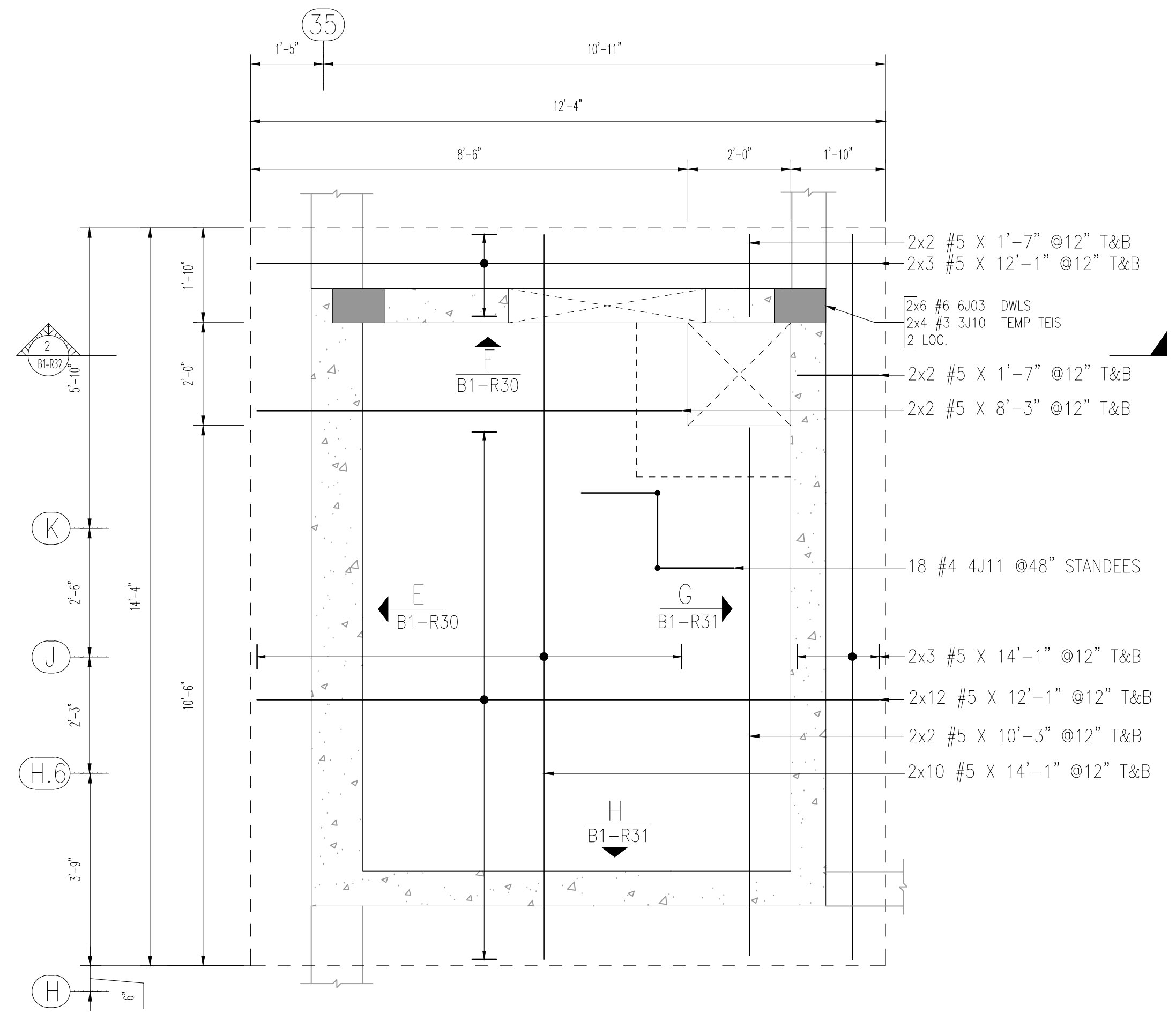
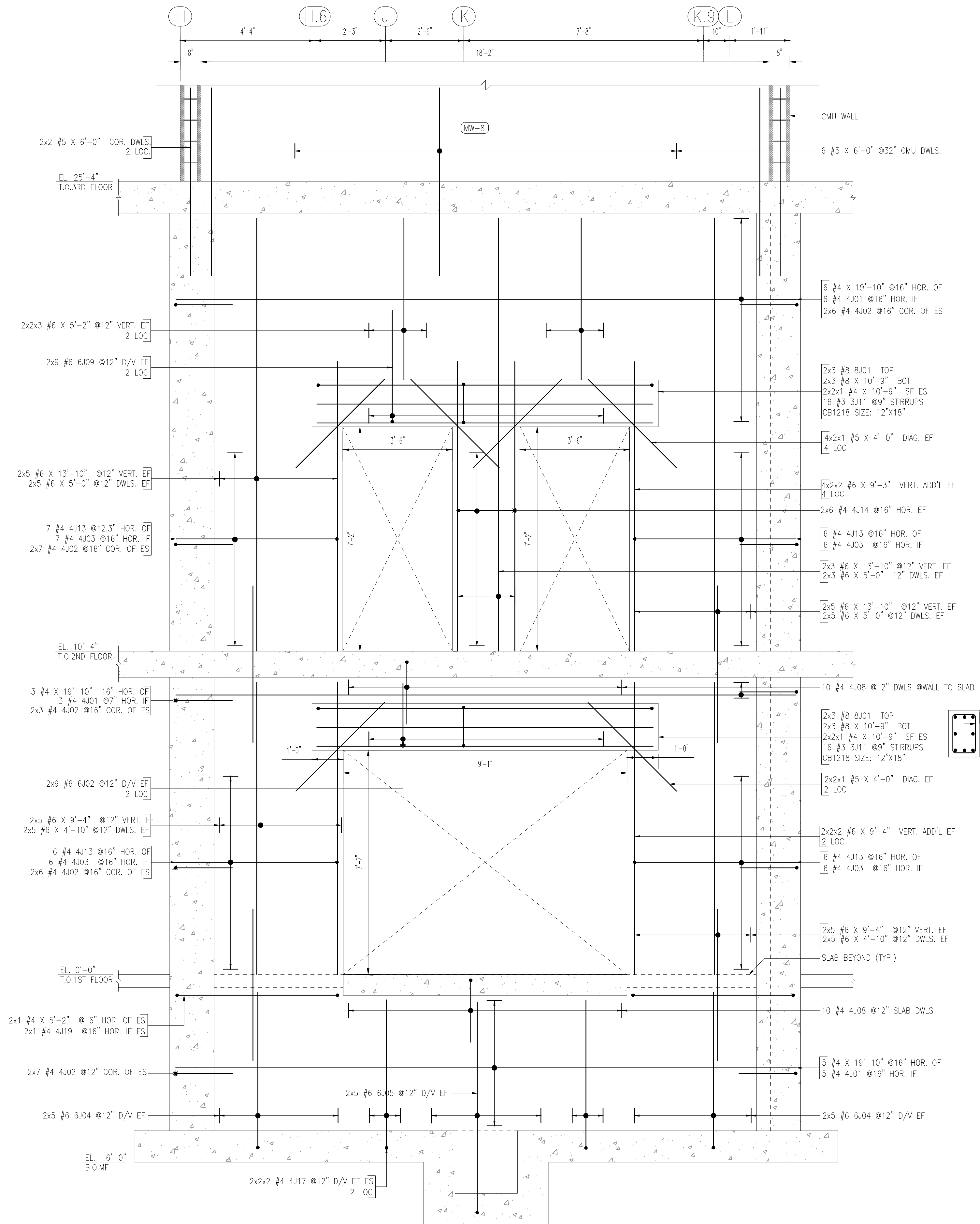


MAT THICKNESS=1'-0"
 DETAIL-A (ELEVATOR-1A&1B)
 SCALE= 1/2=1'-0"
 REF:S2.01A&2.01C

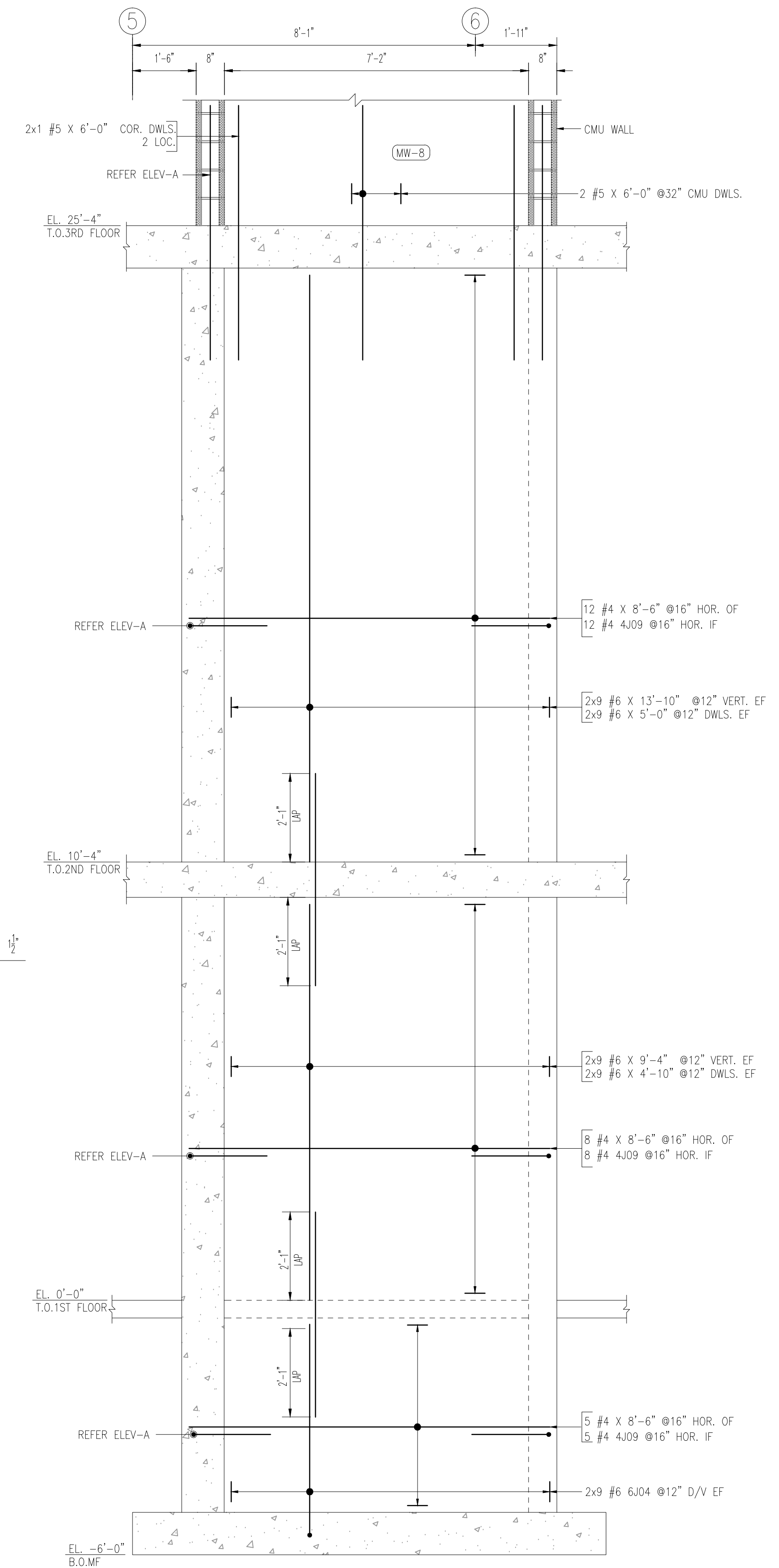


MAT THICKNESS=1'-0"
 DETAIL-B (ELEVATOR-2)
 SCALE= 1/2=1'-0"
 REF:S2.01A&2.01C

SAMPLE

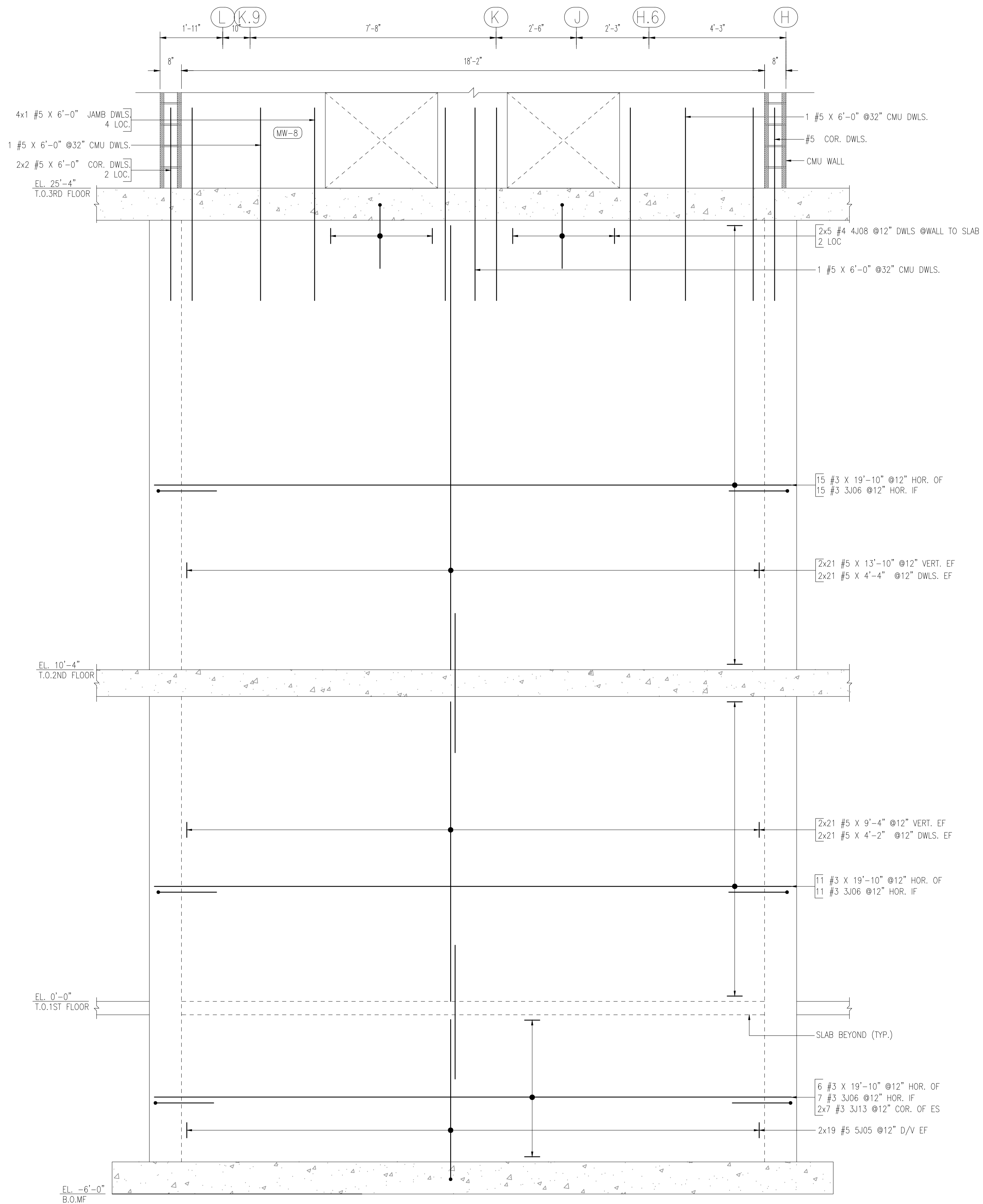


WALL THICKNESS=1'-0"
 CW-12
 ELEVATION A
 SCALE - 1/2"=1'-0"
 REF-S-2.01A

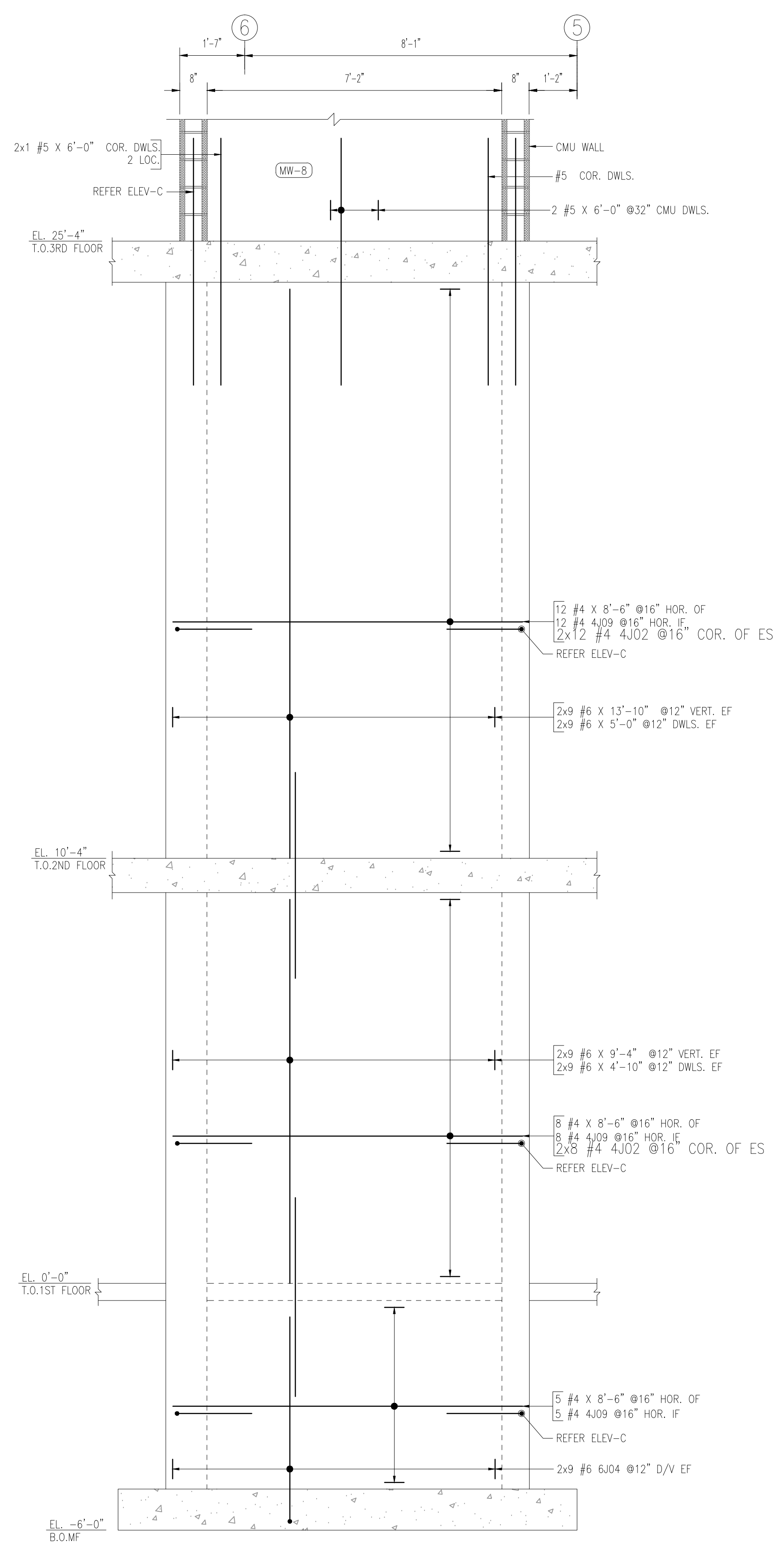


WALL THICKNESS=1'-0"
 CW-12
 ELEVATION B
 SCALE - 1/2"=1'-0"
 REF-S-2.01A

SAMPLE

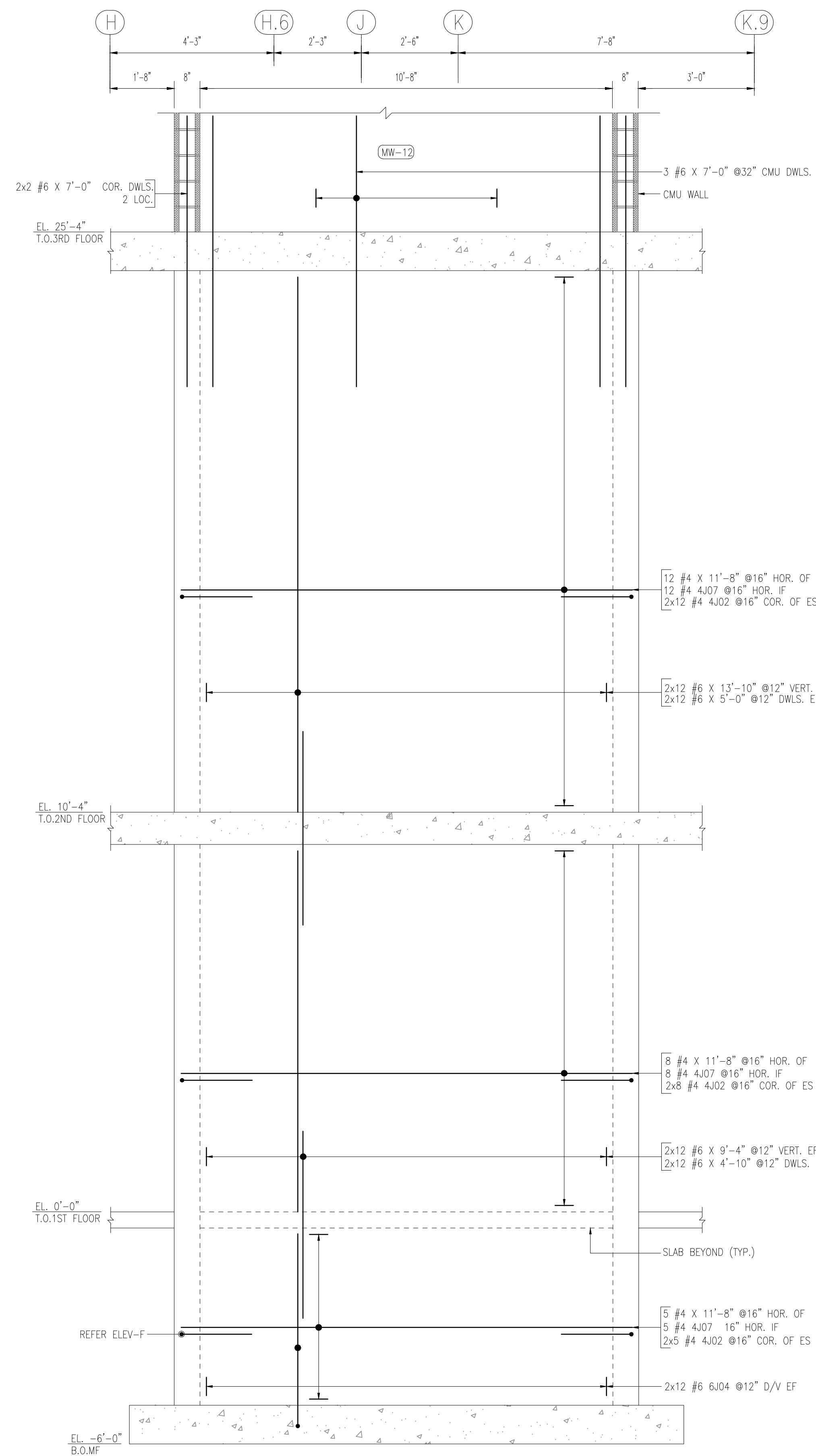


WALL THICKNESS=8"
 CW-8
 ELEVATION
 SCALE - 1/2"=1'-0"
 REF-S-2.01A

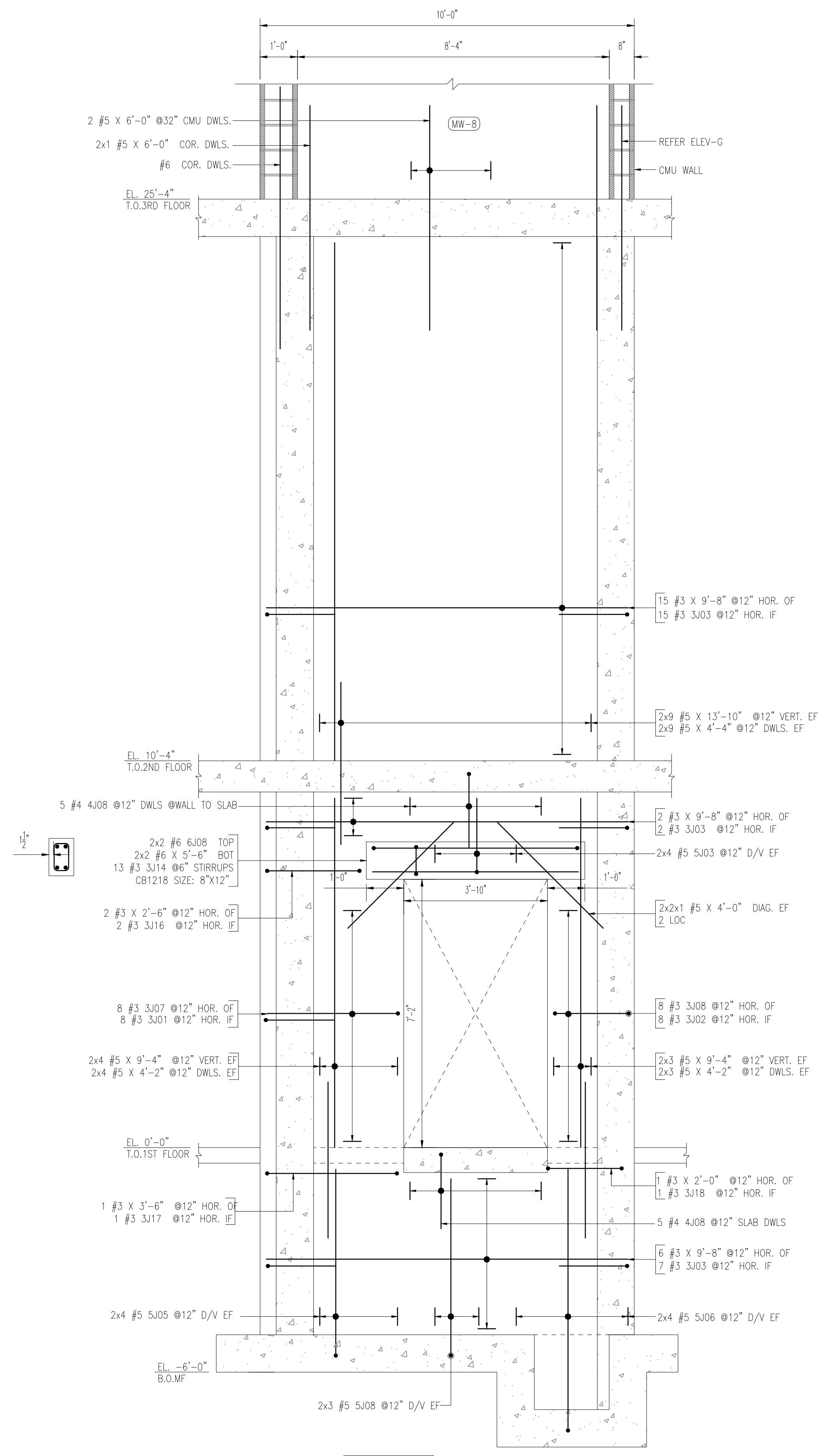


WALL THICKNESS=12"
 CW-12
 ELEVATION
 SCALE - 1/2"=1'-0"
 REF-S-2.01A

SAMPLE

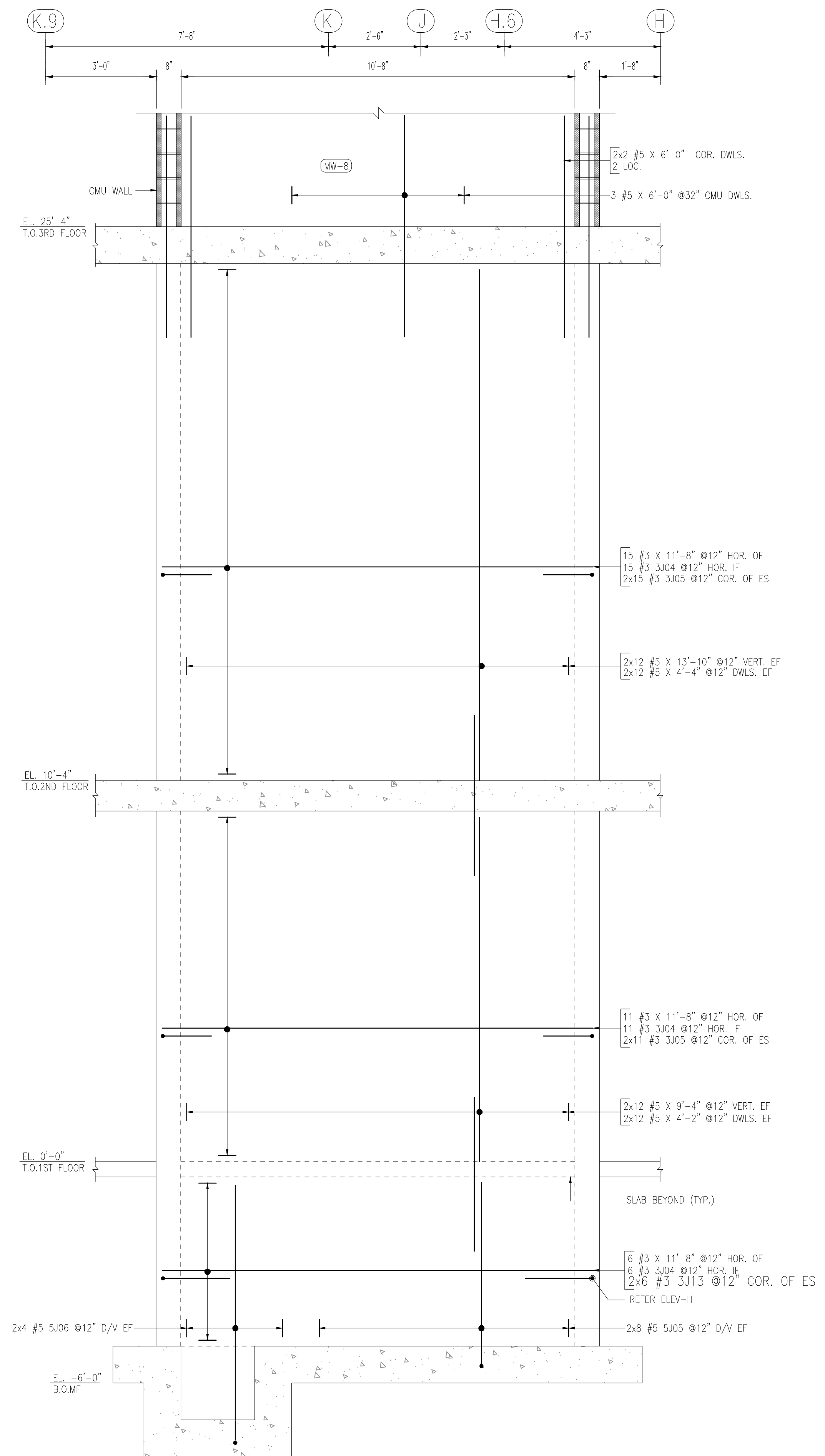


WALL THICKNESS=1'-0"
 CW-12
 ELEVATION
 SCALE - 1/2"=1'-0"
 REF:S-2.01A

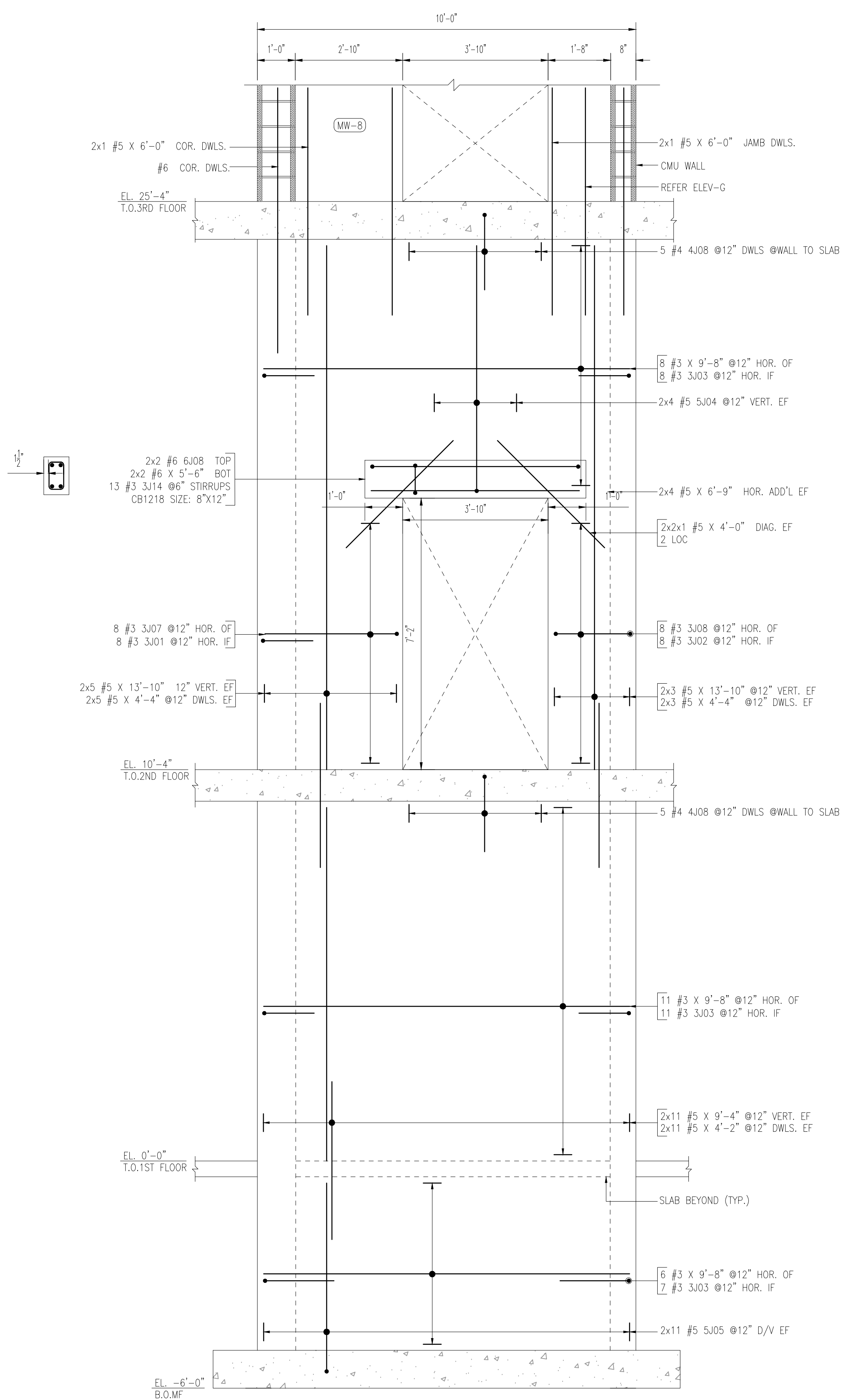


WALL THICKNESS=8"
 CW-8
 ELEVATION
 SCALE - 1/2"=1'-0"
 REF:S-2.01C

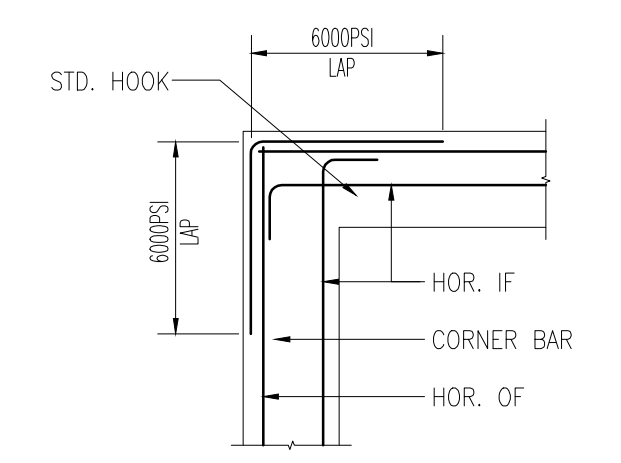
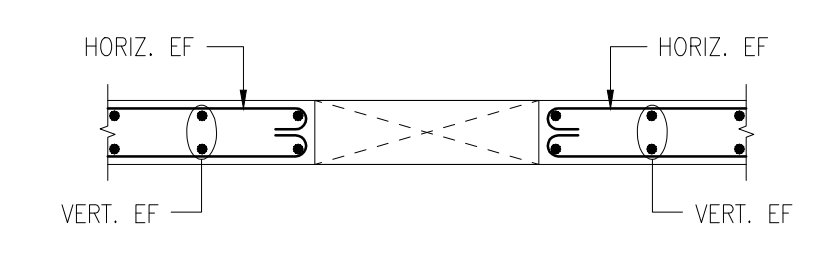
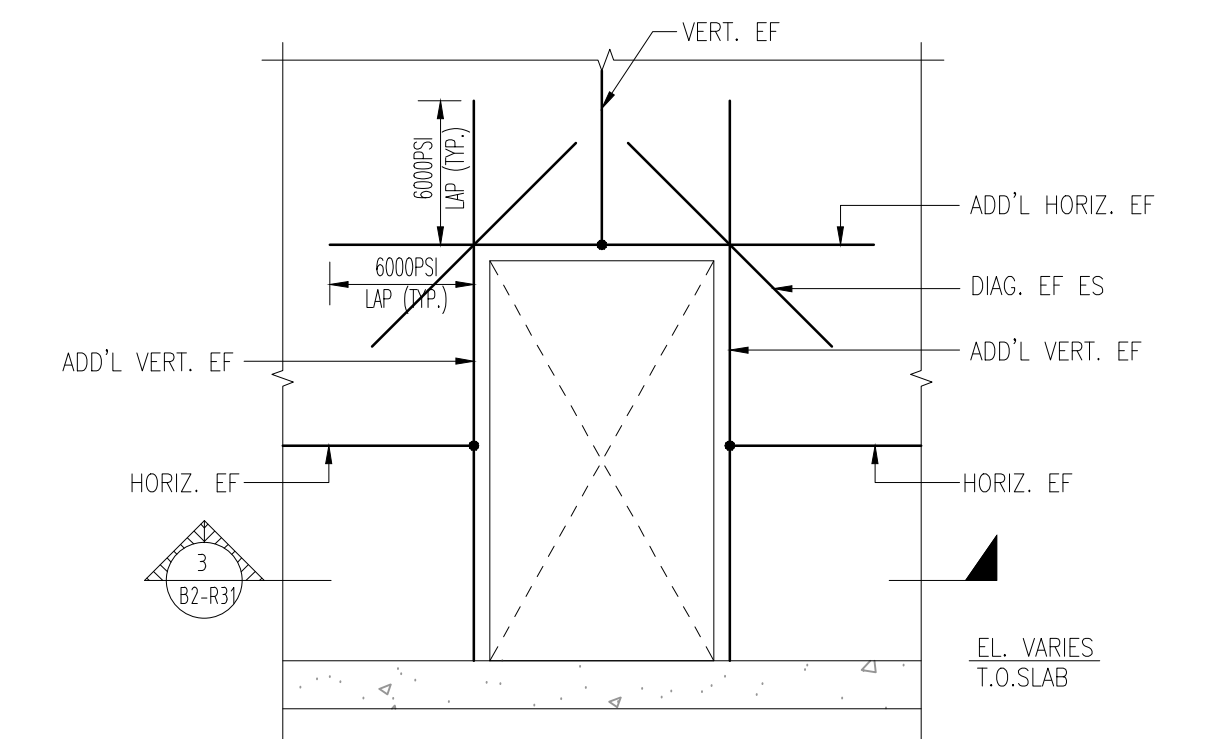
SAMPLE



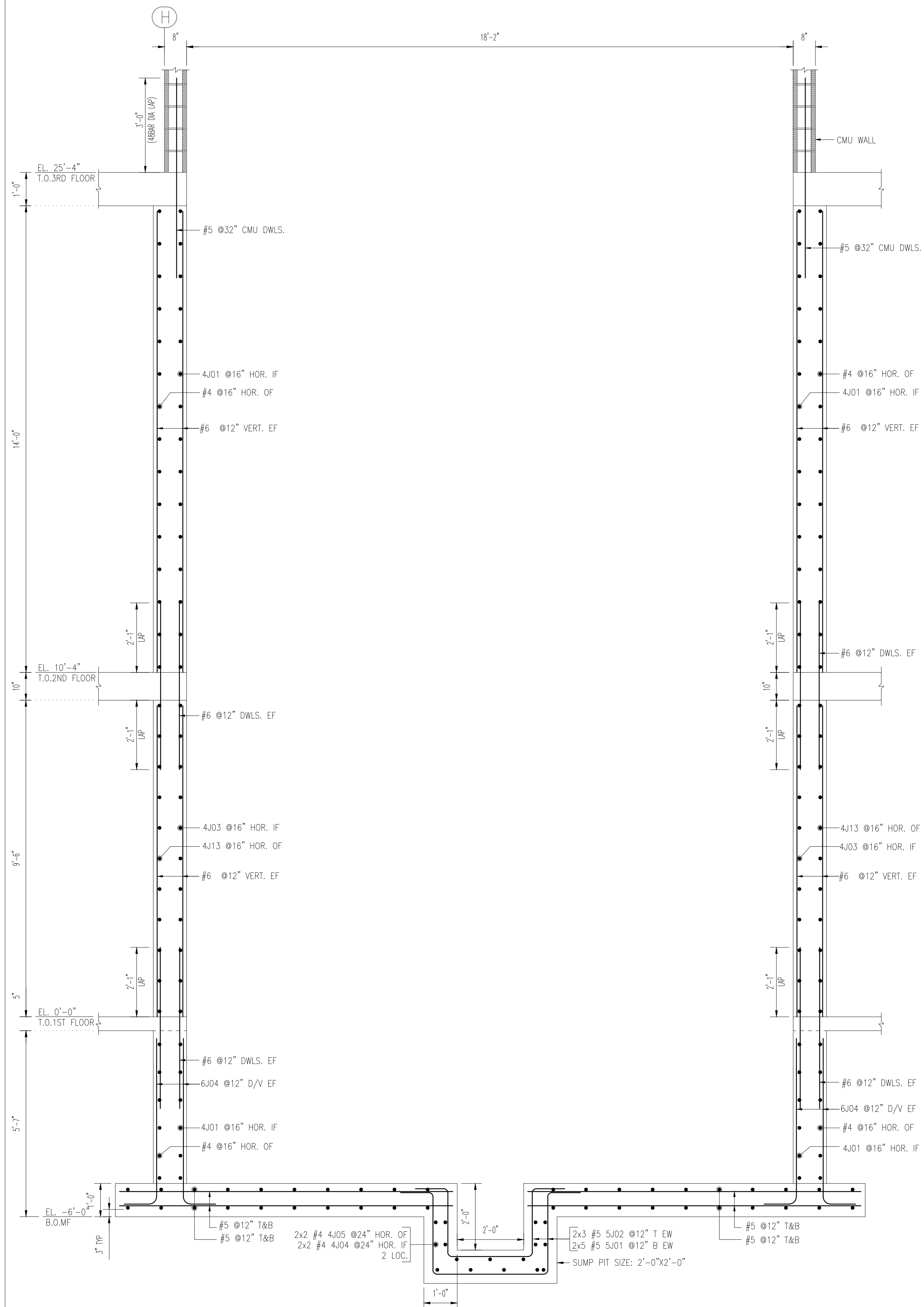
WALL THICKNESS=8"
 CW-8
 ELEVATION G
 SCALE - 1/2"=1'-0"
 REF: S-2.01C



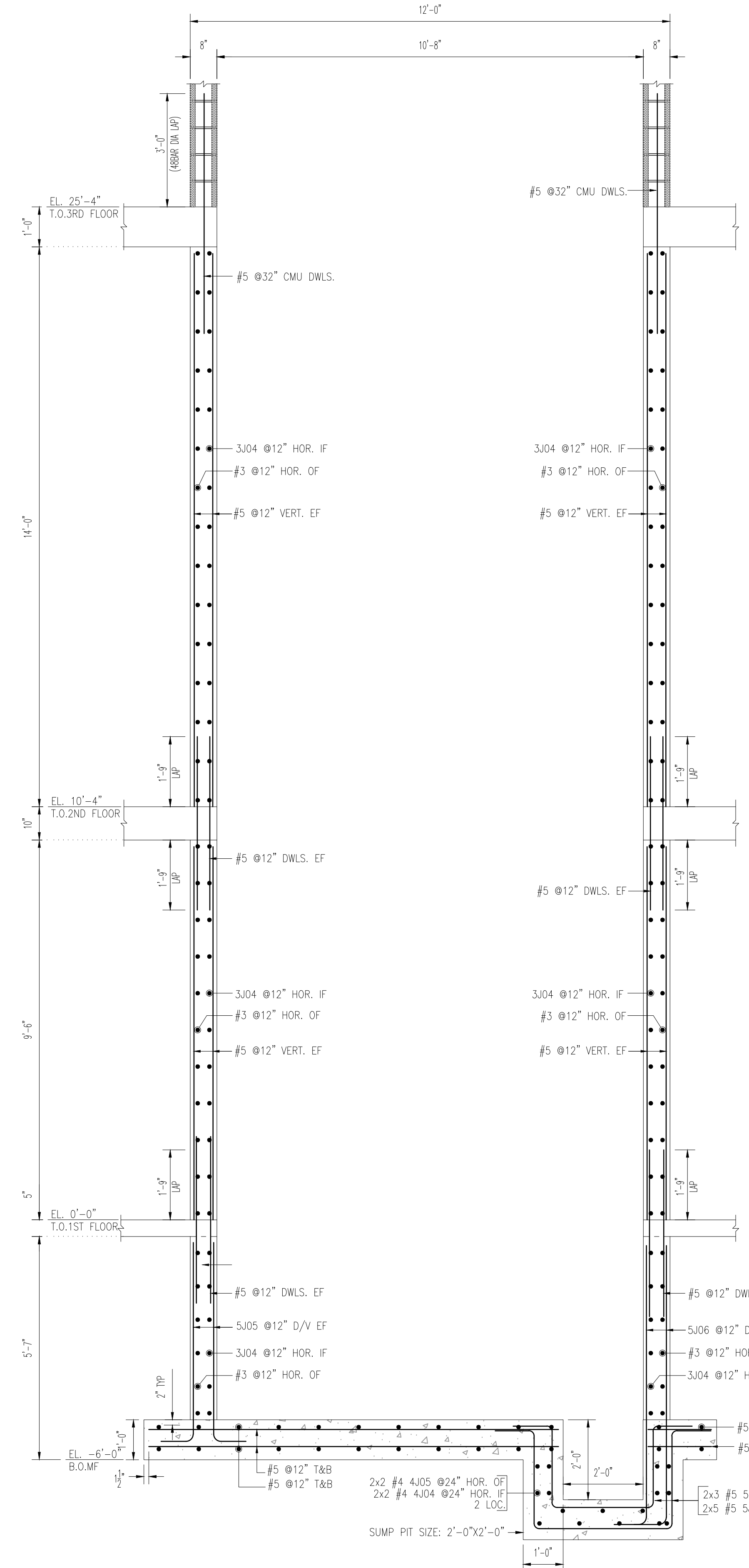
WALL THICKNESS=8"
 CW-8
 ELEVATION H
 SCALE - 1/2"=1'-0"
 REF: S-2.01C



SAMPLE



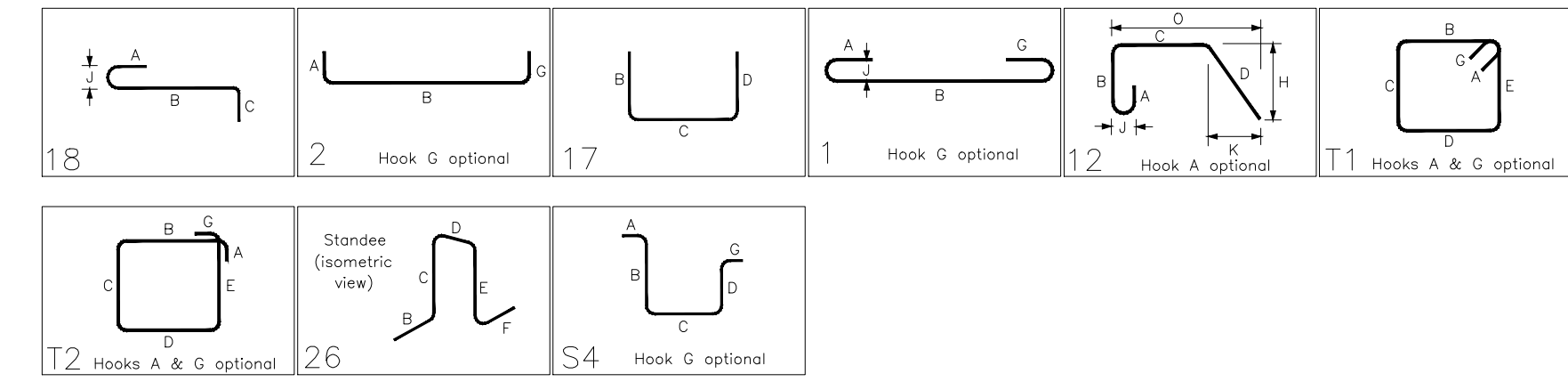
SECTION 1
SCALE: 1/2"=1'-0"
REF: 7/55.00



SECTION 2
SCALE: 1/2"=1'-0"
REF: 7/55.00

Release Number: 01-026 TO 01-032

Bar Mark	Qty	Size	Total Length	Type	X'	Y'	Z'	V'	W'	X'	Y'	Z'	V'	W'
3J01	16	#3	4'-6"	18	0'-6"	3'-6"								
3J02	16	#3	3'-0"	18	0'-6"	2'-0"								
3J03	50	#3	10'-8"	2	0'-6"	9'-8"								
3J04	33	#3	12'-8"	2	0'-6"	11'-8"								
3J05	53	#3	7'-8"	17		1'-4"								
3J06	33	#3	20'-10"	2	0'-6"	19'-10"								
3J07	16	#3	3'-11"	1	0'-5"	3'-4"								
3J08	16	#3	3'-9"	12	0'-5"	2'-0"								
3J09	8	#3	3'-9"	11	0'-4"	0'-11 1/2"	0'-6 1/2"	0'-11 1/2"	0'-6 1/2"					
3J10	8	#3	2'-6"	11	0'-4"	0'-7 3/8"	0'-3 3/8"	0'-7 3/8"	0'-3 3/8"					
3J11	33	#3	4'-8"	12	0'-4"	1'-3"	0'-9"	1'-3"	0'-9"					
3J13	26	#3	3'-8"	17		1'-10"								
3J14	26	#3	3'-0"	12	0'-4"	0'-9"	0'-5"	0'-9"	0'-5"					
3J16	2	#3	3'-6"	2	0'-6"	2'-6"								
3J17	1	#3	4'-6"	2	0'-6"	3'-6"								
3J18	1	#3	3'-0"	2	0'-6"	2'-0"								
4J01	14	#4	21'-2"	2	0'-8"	19'-10"								
4J02	148	#4	3'-8"	17		1'-10"								
4J03	23	#4	6'-4"	18	0'-6"	5'-2"	0'-8"							
4J04	8	#4	7'-3"	17		2'-6"	2'-3"	2'-6"						
4J05	8	#4	9'-0"	17		3'-0"	3'-9"	3'-0"						
4J07	23	#4	13'-0"	2	0'-8"	11'-8"								
4J08	50	#4	3'-6"	17		1'-4"	2'-0"							
4J09	50	#4	9'-10"	2	0'-8"	8'-6"								
4J11	36	#4	5'-4"	26	1'-6"	0'-5"	1'-6"	0'-5"	1'-6"					
4J13	23	#4	5'-8"	1	0'-6"	5'-2"								
4J14	12	#4	2'-10"	1	0'-6"	1'-10"								
4J17	8	#4	5'-5"	2	0'-8"	4'-9"								
4J19	2	#4	6'-6"	2	0'-8"	5'-2"								
5J01	20	#5	10'-6"	34	1'-0"	2'-6"	3'-6"	2'-6"						
5J02	12	#5	8'-9"	34	1'-0"	2'-1"	2'-7"	2'-1"						
5J03	8	#5	2'-7"	1	0'-7"	2'-0"								
5J04	8	#5	7'-1"	1	0'-7"	6'-6"								
5J05	84	#5	5'-10"	2	0'-10"	5'-0"								
5J06	16	#5	7'-10"	2	0'-10"	7'-0"								
5J08	4	#5	5'-7"	2	0'-10"	4'-9"								
6J02	18	#6	2'-8"	1	0'-8"	2'-0"								
6J03	12	#6	4'-1"	2	1'-0"	3'-1"								
6J04	80	#6	6'-0"	2	1'-0"	5'-0"								
6J05	10	#6	7'-9"	2	1'-0"	6'-9"								
6J08	8	#6	7'-6"	2	1'-0"	5'-6"								
6J09	18	#6	4'-3"	1	0'-8"	3'-7"								
8J01	12	#8	13'-5"	2	1'-4"	10'-9"								
8J01	12	#8	5'-9"	2	1'-7"	4'-2"								



ALL BARS IN THIS DRAWING
ASTM A615 GRADE 60
BLACK UNCOATED

ABBREVIATIONS

Top Long Way	T LW
Top Short Way	T SW
Bottom Long Way	B LW
Bottom Short Way	B SW
Top&Bottom	T&B
Corner Bar	Cor.
Vertical	Vert.
Horizontal	Horz.
Each Way	EW
Each Face	EF
Inner Face	IF
Outer Face	OF
Each Side	ES
Dowel	Dwl.
Dowel/Vertical	D/V
Top Of Slab	T.O.S

LAP SCHEDULE

SIZE	6000 PSI (CLASS B)	
	TOP	OTHERS
#3	16"	16"
#4	22"	17"
#5	27"	21"
#6	33"	25"
#7	38"	29"
#8	43"	33"
#9	49"	38"
#10	59"	45"
#11	72"	55"

SAMPLE