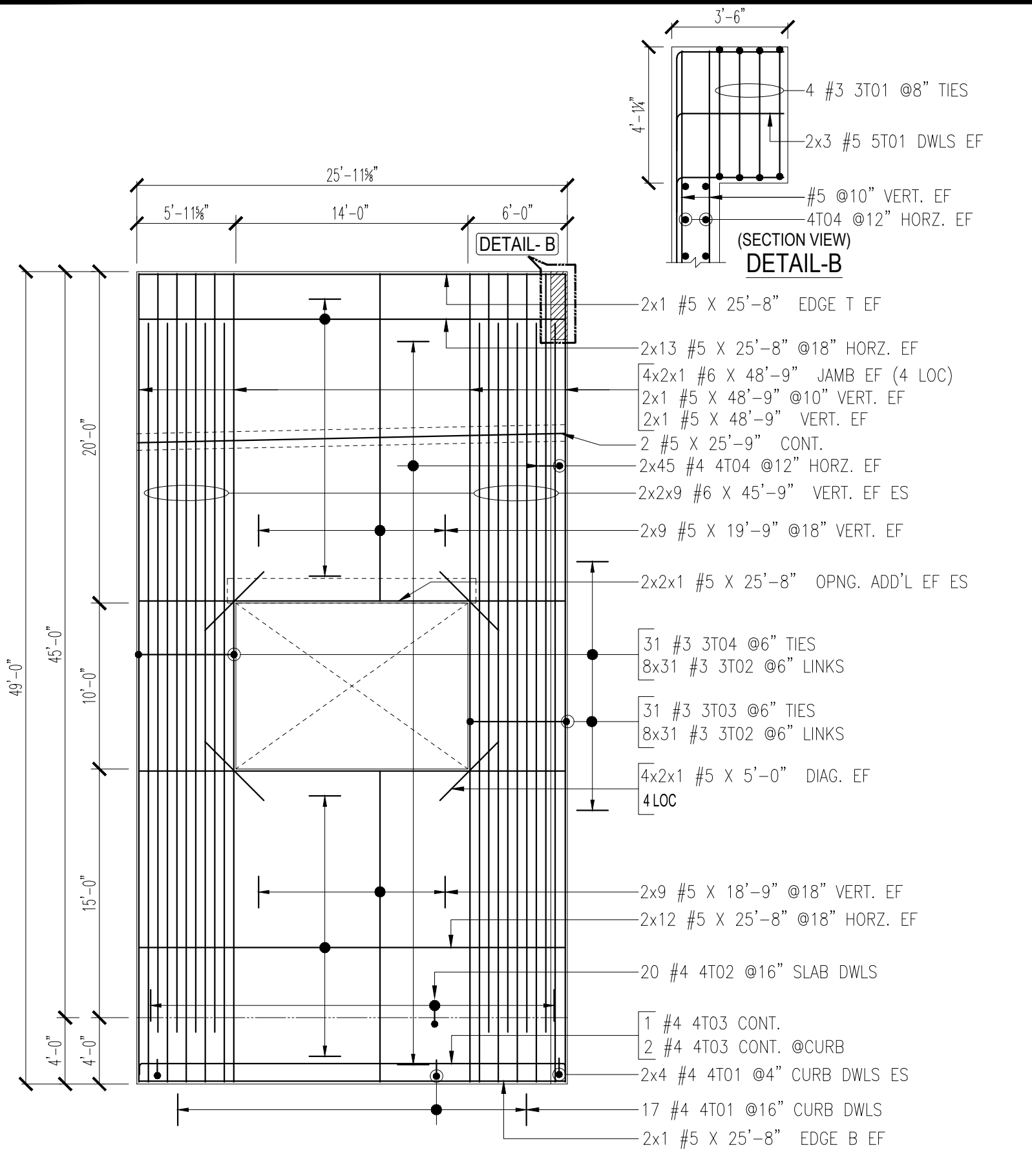


DETAIL-A

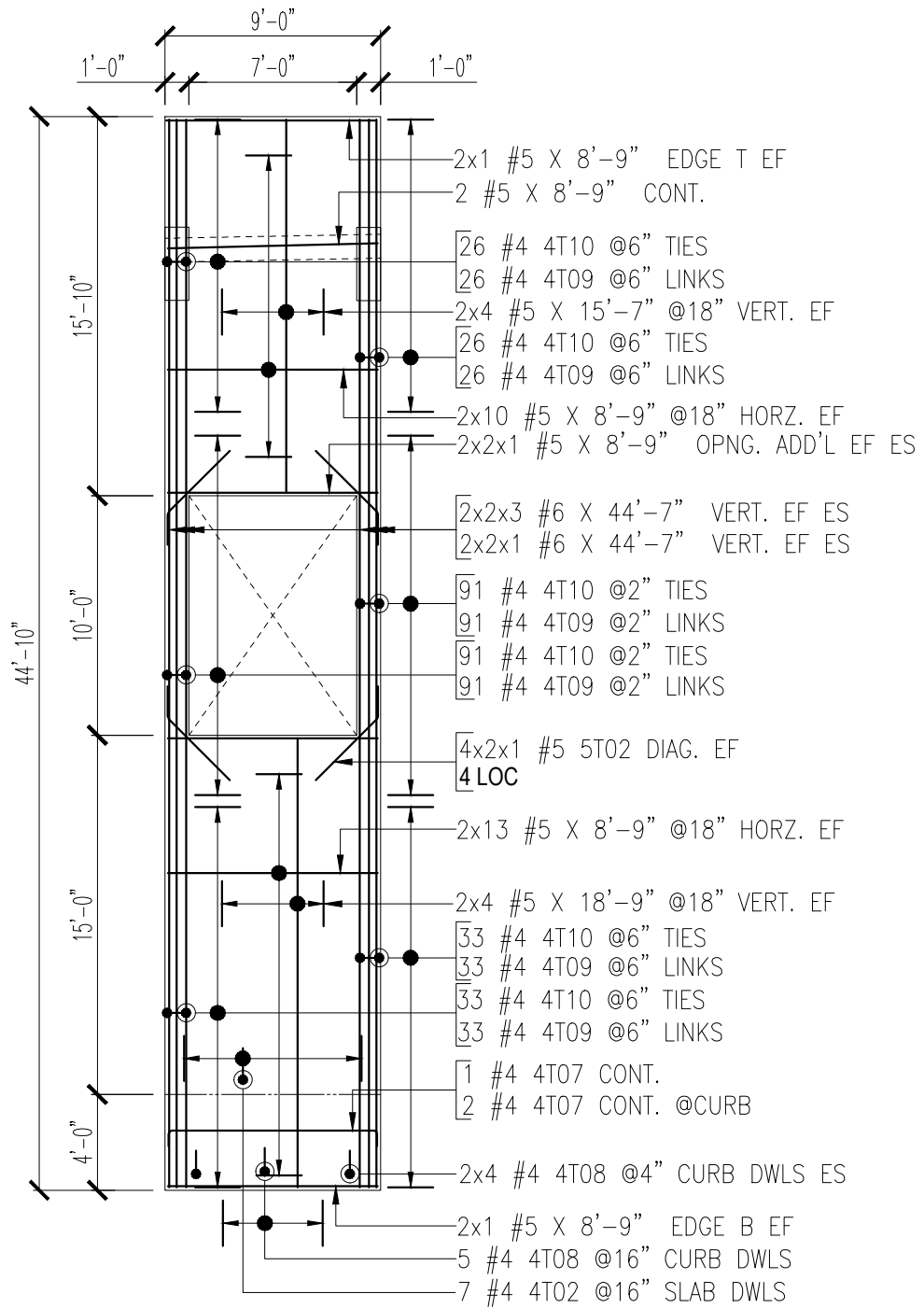
- 1 #5 X 25'-6" EDGE T OF
- 1 #5 X 24'-11" EDGE T IF
- 2 #5 X 25'-6" CONT.
- 4x2x1 #6 X 46'-9" JAMB EF (4 LOC)
- 1 #5 X 46'-9" ADD'L OF
- FIELD CUT @ OPNG. LOC
- 2x2x9 #6 X 43'-9" VERT. EF ES
- 2x9 #5 X 19'-9" @18" VERT. EF
- 2x1 #5 X 25'-6" OPNG. ADD'L OF
- 2x1 #5 X 24'-11" OPNG. ADD'L IF
- 2 LOC
- 31 #3 3T12 @6" TIES
- 5x31 #3 3T02 @6" LINKS
- 31 #3 3T04 @6" TIES
- 5x31 #3 3T02 @6" LINKS
- 14x2x1 #5 X 5'-0" DIAG. EF (14 LOC)
- 2x2 #5 X 7'-7" @18" VERT. EF
- 2x7 #5 X 16'-9" @18" VERT. EF
- 2x1 #6 X 16'-9" OPNG. ADD'L EF
- 19 #5 X 25'-6" @18" HORIZ. OF
- 19 #5 X 24'-11" @18" HORIZ. IF
- 2x1 #5 X 7'-4" OPNG. ADD'L OF
- 2x5 #5 X 5'-9" @18" HORIZ. EF
- 5 #5 X 16'-3" @18" HORIZ. OF
- 5 #5 X 15'-8" @18" HORIZ. IF
- 12 #4 4T02 @16" SLAB DWLS
- 2 #4 4T06 @16" SLAB DWLS @OPNG.
- 1 #4 4T05 CONT.
- 1 #4 4T05 CONT. @CURB
- 2x4 #4 4T01 @6" CURB DWLS ES
- 1 #5 X 25'-6" EDGE B OF
- 1 #5 X 24'-11" EDGE B IF
- 18 #4 4T01 @16" CURB DWLS

- 1 #5 X 25'-6" CONT. OF
- 1 #5 X 24'-11" CONT. IF
- 2x2x1 #5 5T03 DIAG. EF ES
- 2x2 #5 X 1'-2" @18" VERT. EF

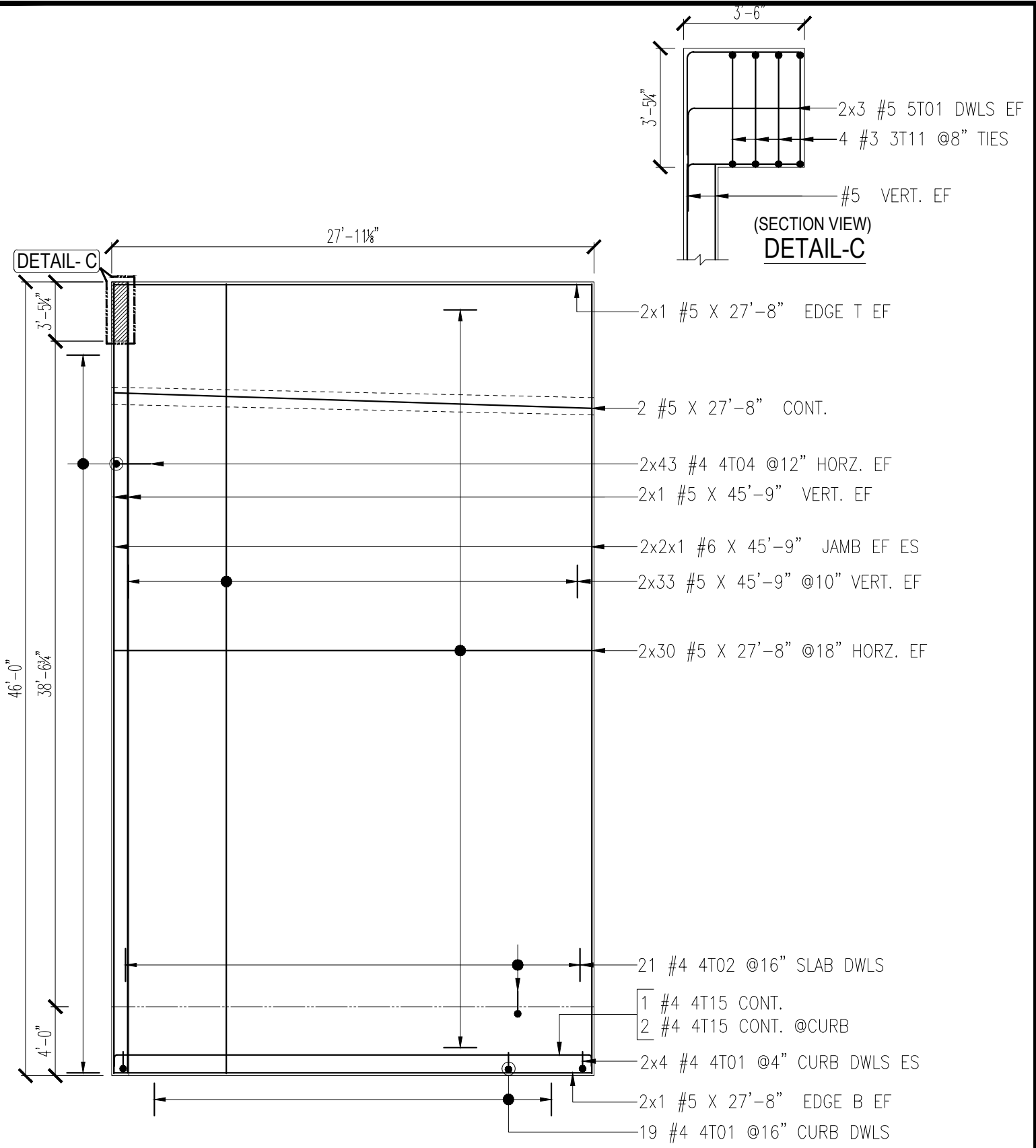
SAMPLE



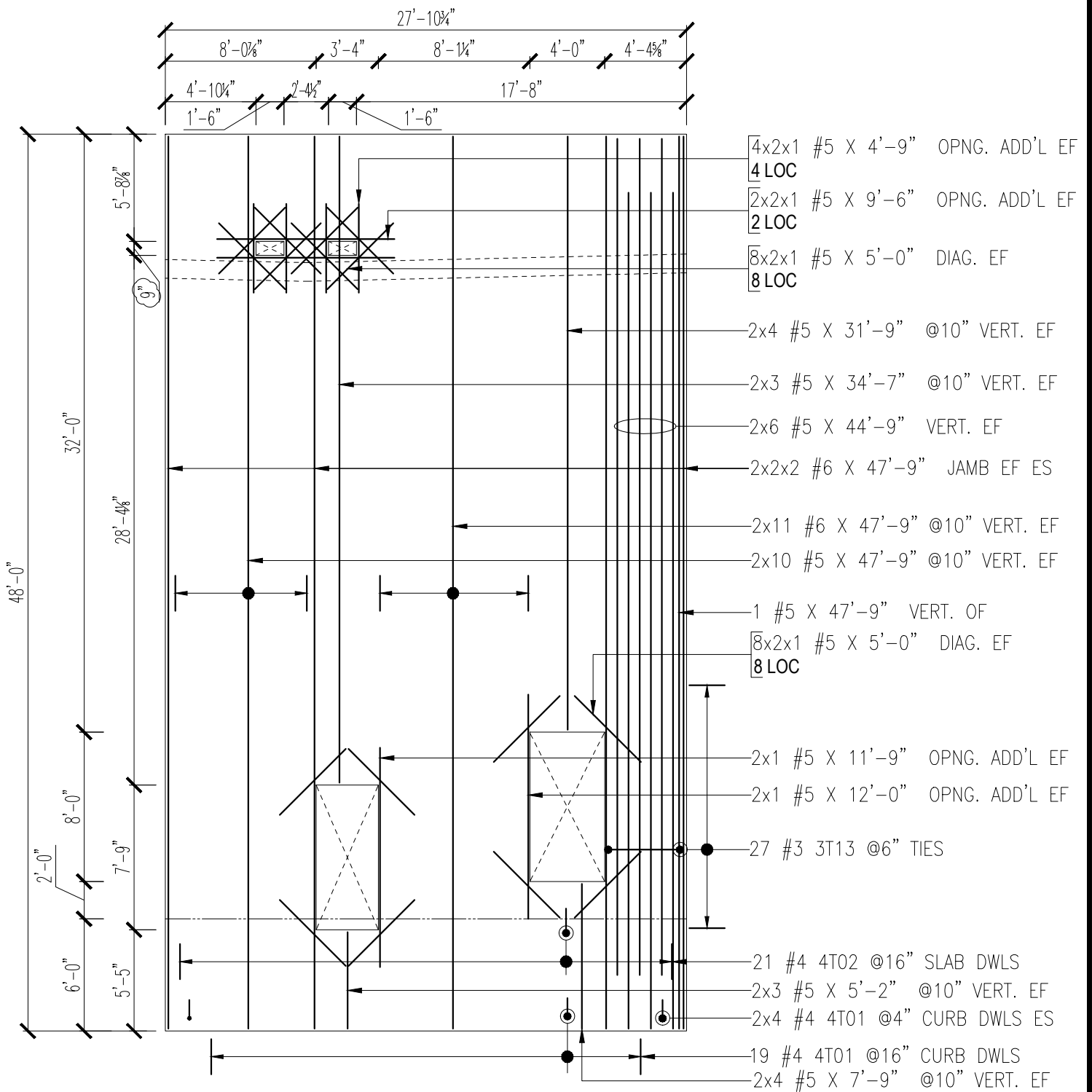
SAMPLE



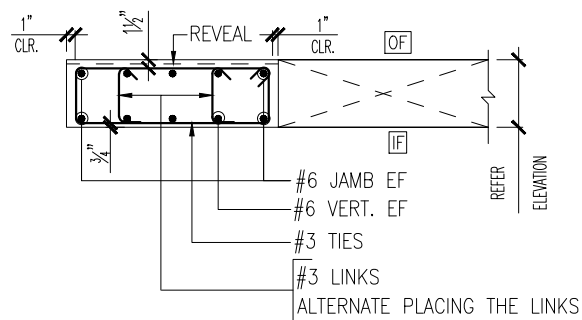
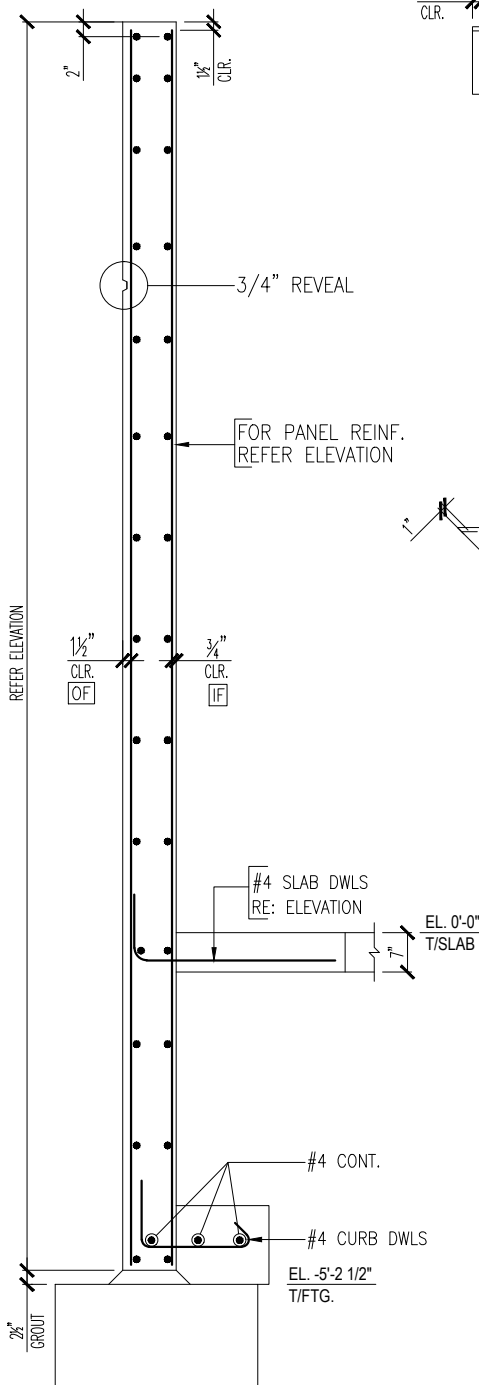
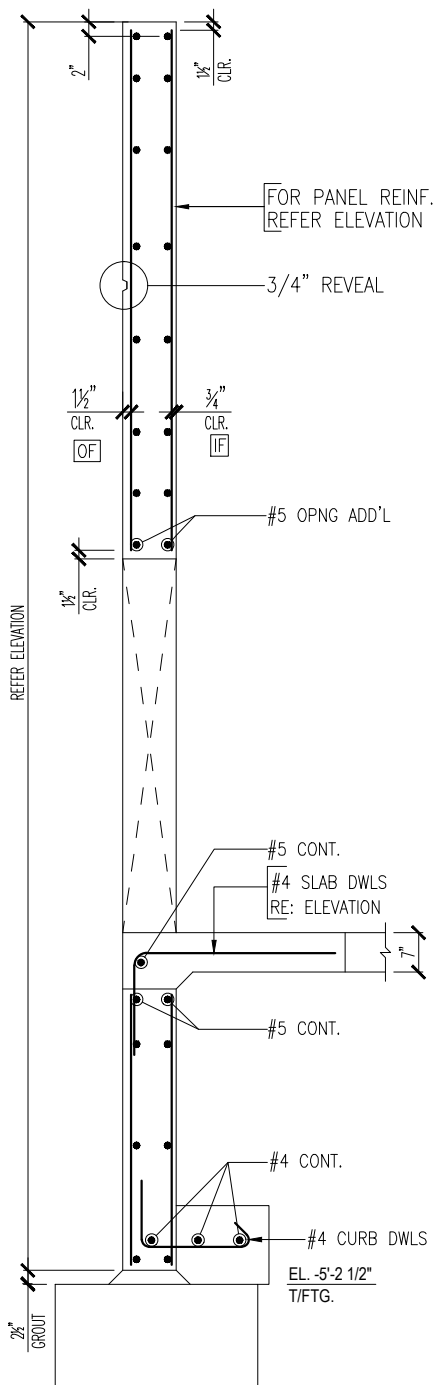
SAMPLE



SAMPLE

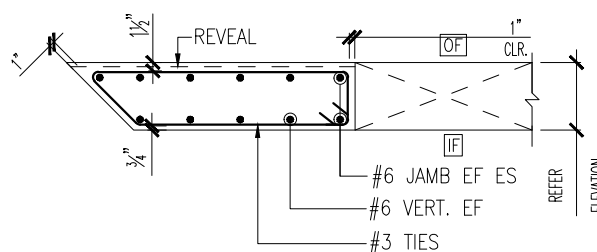


SAMPLE



TYPICAL JAMB DETAIL @ BUTT JOINT

Scale - 1/2"=1'-0"
REF: WP1



TYPICAL JAMB DETAIL @ MITER JOINT

Scale - 1/2"=1'-0"
REF: 7/SD-6

ABBREVIATIONS

TOP OF FINISHED FLOOR	T/FF
EACH SIDE	ES
EACH FACE	EF
LOCATION	LOC
VERTICAL	VERT
HORIZONTAL	HOR
OPENING	OPNG
ADDITIONAL	ADD'L
CONTINUOUS	CONT
INNER FACE	IF
OUTER FACE	OF
DOWELS	DWLS
OUTER FACE	OF
TOP	T
BOTTOM	B

TYPICAL PANEL SECTION

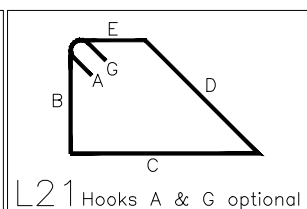
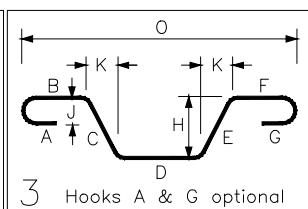
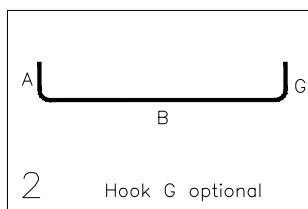
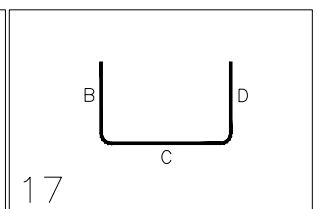
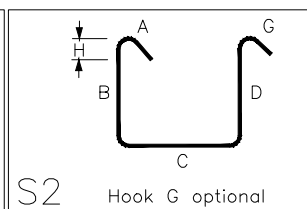
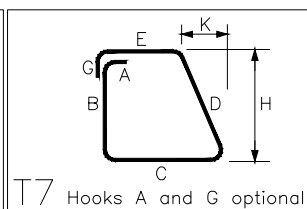
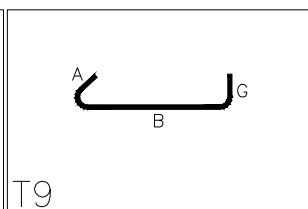
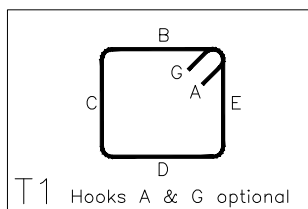
Scale - 1/2"=1'-0"

SAMPLE

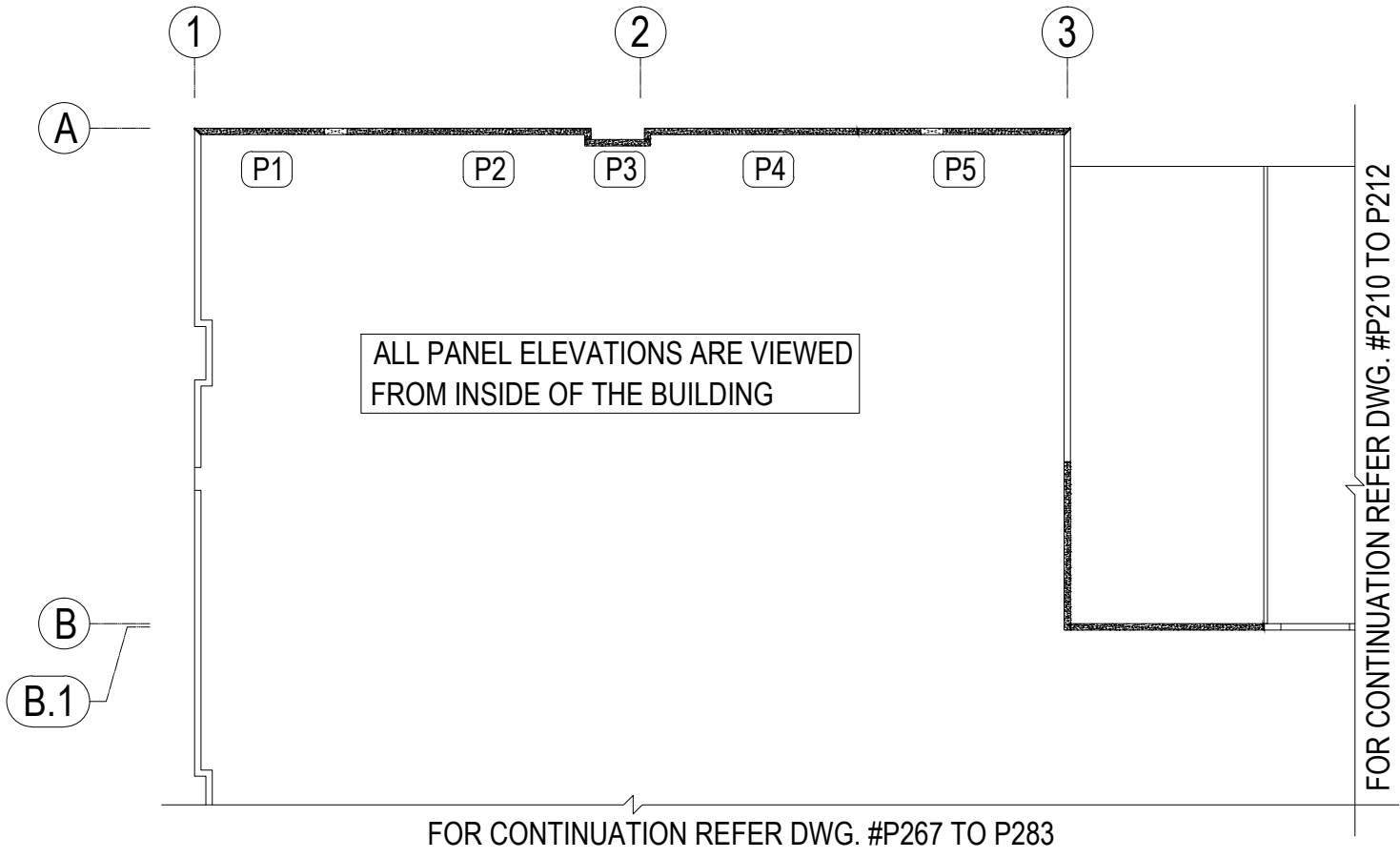
Release Number: P201 TO P209

BAR LIST


Bar Mark	Qty	Size	Total Length	Type	'A'	'B'	'C'	'D'	'E'	'F'	'G'	'H'	'J'	'K'	'O'	'R'
3T01	4	#3	9'-10 1/2"	T1	0'-4"	0'-9"	3'-10 1/4"	0'-9"	3'-10 1/4"		0'-4"					
3T02	806	#3	1'-3"	T9	0'-4"	0'-7"					0'-4"					
3T03	31	#3	13'-6"	T1	0'-4"	0'-7"	5'-10"	0'-7"	5'-10"		0'-4"					
3T04	62	#3	13'-5"	T1	0'-4"	0'-7"	5'-9 1/2"	0'-7"	5'-9 1/2"		0'-4"					
3T07	368	#3	1'-3 1/4"	T9	0'-4"	0'-7 1/4"					0'-4"					
3T08	41	#3	7'-7 1/2"	T1	0'-4"	2'-10 1/2"	0'-7 1/4"	2'-10 1/2"	0'-7 1/4"		0'-4"					
3T09	41	#3	8'-2 1/2"	T1	0'-4"	3'-2"	0'-7 1/4"	3'-2"	0'-7 1/4"		0'-4"					
3T10	27	#3	10'-9"	T1	0'-4"	4'-5 1/4"	0'-7 1/4"	4'-5 1/4"	0'-7 1/4"		0'-4"					
3T11	4	#3	8'-8"	T1	0'-4"	0'-9 3/4"	3'-2 1/4"	0'-9 3/4"	3'-2 1/4"		0'-4"					
3T12	31	#3	12'-5 1/2"	L21	0'-4"	0'-7"	5'-5 1/4"	0'-8 1/4"	5'-0 1/2"		0'-4"	0'-7"		0'-5 1/4"		
3T13	27	#3	9'-2"	L21	0'-4"	0'-7"	3'-10"	0'-9"	3'-4"		0'-4"	0'-7"		0'-6"		
4T01	130	#4	2'-10 1/4"	S2	0'-4 1/2"	1'-6 1/4"	1'-0"					0'-3"				
4T02	117	#4	4'-4"	17		1'-4"	3'-0"									
4T03	3	#4	27'-0 1/2"	2	0'-8"	25'-8 1/2"					0'-8"					
4T04	176	#4	3'-3"	17		1'-3"	2'-0"									
4T05	2	#4	26'-6 3/4"	2	0'-8"	25'-2 1/4"					0'-8"					
4T06	2	#4	4'-6"	17		1'-6"	3'-0"									
4T07	3	#4	10'-1"	2	0'-8"	8'-9"					0'-8"					
4T08	13	#4	3'-1 1/2"	S2	0'-4 1/2"	1'-9"	1'-0"					0'-3"				
4T09	300	#4	1'-6 3/4"	T9	0'-4 1/2"	0'-9 3/4"					0'-4 1/2"					
4T10	300	#4	4'-0 1/2"	T1	0'-4 1/2"	0'-10"	0'-9 3/4"	0'-10"	0'-9 3/4"		0'-4 1/2"					
4T11	3	#4	28'-9 1/2"	2	0'-8"	27'-5 1/2"					0'-8"					
4T12	3	#4	27'-4 3/4"	2	0'-8"	26'-0 3/4"					0'-8"					
4T13	3	#4	22'-7 3/4"	2	0'-8"	21'-3 3/4"					0'-8"					
4T15	3	#4	29'-0"	2	0'-8"	27'-8"					0'-8"					
4T17	32	#4	2'-11"	S2	0'-4 1/2"	1'-6 1/2"	1'-0"					0'-3"				
5T01	12	#5	6'-3"	17		3'-0"	3'-3"									
5T02	8	#5	5'-0"	3		1'-4"	3'-8"					2'-7 1/2"		2'-6 3/4"	3'-10 1/4"	
5T03	4	#5	5'-0 1/4"	3		0'-10"	4'-2 1/4"					2'-11 1/4"		2'-11 1/2"	3'-9 1/2"	



SAMPLE



PANEL-1 TO P-5 LAYOUT
REF: S2.1 & S2.2



SAMPLE