

# Cover Page

## General Informations

Project Name : Sample Estimation Estimation No :  
Address :  
Architect Engineer : Estimator :  
Structural Engineer : Created Date : 10/10/2020  
Civil Engineer : Modified Date : 10/14/2020  
Customer : Job Type : Tonnage  
Revision No : 2 Bid Date :

## General Reference

Sketches : Sketches Date :  
Alt Package : Package Date :  
Specs No : Specs Date :  
Coated Of Bars : Black Grade Of Bars : A615/60  
Addendum No 1 : Addendum Date 1 :

## Project Informations

Scope Of Work : Isolated Footing, Pier, continuous Footing, Grade Beam, Elevator pit, Slab on Grade, Deck slab  
Excludes : All Smooth Dowels, Curb & Gutter, All Precast structure, Concrete Ramp, Staircase, Dock Leveler Pit.  
Assumption : 1. Continuous footing reinforcement we follow #5 @12" T&B LW & #5@24" T&B SW, 2. Sec-8/SD-6.0 1 #3 TOP CONT. Bar Provided at Full Slab Edge, 3. In Sec-6/SD-6.0 #4 @12" Dowels Length is Taken as 5'-0" & Sec-8/SD-6.0 #3 @8" Dowels Length is Taken as 5'-0", 4. In Sec-10/SD-6.3 Drag Bar Size & Spacing is Taken as #6 @12" O.C 5. Isolated Footing Support Bars as U-Bar #5 Reinforcement & Match with Long Way & Short Way Reinforcement. 6. @ Scrubber Dump CMU Reinforcement as #5 @48" O.C. 7. SEC 5/SD1.1 Headed Bars Leg Value as 3'-0" X 1'-2" X 3'-0" & 3'-0" X 1'-0" X 3'-0".  
Value Added Information :

## Drawing Reference

Drawing : S-0.0 To SD10.0 Drawing Date :  
Size Unit : Imperial Building Code : ACI 318-14  
Length Unit : Feet Inches Concrete Strength : 4000PSI  
Weight Unit : POUNDS Estimating Lap : Standard  
Rebar Stock : 40 Rebar Max. Stock : 60  
Rebar Coating : Black Rebar Grade : A615/60  
Plain Coating : Black Plain Grade : A615/60

## Lap Details

Estimating Lap : Standard  
Concrete Strength : 4000PSI

## Cover Details

Cover : Standard

Lap Schedule		
Barsize	Bottom	Top
#4	25"	32"
#5	31"	40"
#6	37"	48"
#7	54"	70"
#8	62"	80"
#9	81"	91"
#10	79"	102"

Cover	Description
3"	Foundation Bottom & Sides
2"	Foundation Top
2"	Wall all sides
2"	Slab all sides

## Estimated Weight Bar Grade & Coated Summary

Rebar Coating : Black

Rebar Grade : A615/60

BarSize	Straight	Light	Heavy	Blank	Total Weight
#3	646191.53	1511.61	12.03	0.00	647715.17
#4	49531.12	69361.96	487.56	0.00	119380.64
#5	89180.32	0.00	22466.15	0.00	111646.47
#6	237969.34	0.00	0.00	0.00	237969.34
#7	2497.77	0.00	1612.22	0.00	4109.99
#8	357007.49	0.00	102367.92	0.00	459375.41
#9	29413.88	0.00	1348.03	0.00	30761.91
#10	308124.04	0.00	26742.46	0.00	334866.50
<b>Grade Total</b>	<b>1719915.49</b>	<b>70873.57</b>	<b>155036.37</b>	<b>0.00</b>	<b>1945825.43</b>

## Estimated Weight Barsize Summary

BarSize	Straight	Light	Heavy	Blank	Total Weight
#3	646191.53	1511.61	12.03	0.00	647715.17
#4	49531.12	69361.96	487.56	0.00	119380.64
#5	89180.32	0.00	22466.15	0.00	111646.47
#6	237969.34	0.00	0.00	0.00	237969.34
#7	2497.77	0.00	1612.22	0.00	4109.99
#8	357007.49	0.00	102367.92	0.00	459375.41
#9	29413.88	0.00	1348.03	0.00	30761.91
#10	308124.04	0.00	26742.46	0.00	334866.50
<b>Grade Total</b>	<b>1719915.49</b>	<b>70873.57</b>	<b>155036.37</b>	<b>0.00</b>	<b>1945825.43</b>

## Consolidated Weight

Line	Member (Black)	Weight in LBS
101	Isolated Footings	505801.63
102	Pier / Pedestal	9009.95
103	Continuous Footing	45958.51
104	Grade Beam	397870.17
105	Elevator Pit	774.57
106	Slab On Grade	517759.80
107	2nd Floor Framing plan	111919.02
108	3rd Floor Framing Plan	190707.93
109	4th Floor Framing Plan	157579.99
110	2nd Floor Framing plan	2028.05
111	3rd Floor Framing Plan	2639.27
112	4th Floor Framing Plan	2164.32
113	Pier / Pedestal	1612.22

Total Weight in LBS : 1945825.43

Gross Total Weight in LBS : 1945825.43

## Accessories Consolidated

Line	Member	no of sheets
107	2nd Floor Framing plan	3151.00
108	3rd Floor Framing Plan	5272.00
109	4th Floor Framing Plan	3566.00

Total No Of Sheet : 11989.00

## Estimated Takeoff View

Line	Mark	Grade	Bar Size	Shape	Layer	Multi	Qty	A	B	C	D	E	F	G	H	J	K	R	O	Total Length	Weight	Bend Type	Notes	
101	Member :Isolated Footings							Level :Sub-Structure													Code :Takeoff Rebar			
1a	Addl Bars @Grade Beam Base plate area (BP(20" x 4'-5") @ 1A/SD5.20)	A615/60 Black	#8	S3	1	18	12	0-11	4-7	3-0	4-7			0-11						14-0	8074.08	HB	T SW	
1b		A615/60 Black	#8	S3	1	18	12	0-11	4-7	5-0	4-7			0-11						16-0	9227.52	HB	T LW	
1c		A615/60 Black	#6	0	1	18	2		3-0											3-0	162.22	ST	Top Addl	
1d		A615/60 Black	#6	0	1	18	2		5-9											5-9	310.91	ST	Top Addl	
1e	BP(20" x 4'-11") @ 1A/SD5.20	A615/60 Black	#8	S3	1	18	12	0-11	4-7	3-0	4-7			0-11						14-0	8074.08	HB	T SW	
1f		A615/60 Black	#8	S3	1	18	12	0-11	4-7	6-3	4-7			0-11						17-3	9948.42	HB	T LW	
1g		A615/60 Black	#6	0	1	18	2		3-0											3-0	162.22	ST	Top Addl	
1h		A615/60 Black	#6	0	1	18	2		6-3											6-3	337.95	ST	Top Addl	
1i	BP(24" x 4'-11") @ 1A/SD5.20	A615/60 Black	#8	S3	1	8	12	0-11	2-7	3-4	2-7			0-11						10-4	2647.79	HB	T SW	
1j		A615/60 Black	#8	S3	1	8	12	0-11	2-7	6-3	2-7			0-11						13-3	3396.24	HB	T LW	
1k		A615/60 Black	#6	0	1	8	2		3-4											3-4	80.03	ST	Top Addl	
1l		A615/60 Black	#6	0	1	8	2		6-3											6-3	150.20	ST	Top Addl	
1m	BP(20" x 4'-5") @ 1B/SD5.20	A615/60 Black	#8	S3	1	20	14	0-11	2-7	3-4	2-7			0-11						10-4	7722.71	HB	T SW	
1n		A615/60 Black	#8	S3	1	20	14	0-11	2-7	6-3	2-7			0-11						13-3	9905.70	HB	T LW	
1o		A615/60 Black	#6	0	1	20	2		3-4											3-4	200.07	ST	Top Addl	
1p		A615/60 Black	#6	0	1	20	2		6-3											6-3	375.50	ST	Top Addl	
1q	BP(20" x 3'-7") @ 1/SD5.20	A615/60 Black	#8	S3	1	12	12	0-11	4-7	3-0	4-7			0-11						14-0	5382.72	HB	T SW	
1r		A615/60 Black	#8	S3	1	12	12	0-11	4-7	4-11	4-7			0-11						15-11	6120.92	HB	T LW	
1s		A615/60 Black	#6	0	1	12	2		3-0											3-0	108.14	ST	Top Addl	
1t		A615/60 Black	#6	0	1	12	2		4-11											4-11	177.36	ST	Top Addl	
1u	BP(23" x 3'-7") @ 1A/SD5.20	A615/60 Black	#8	S3	1	12	2	0-11	2-7	3-3	2-7			0-11						10-3	656.82	HB	T SW	
1v		A615/60 Black	#8	S3	1	12	12	0-11	2-7	4-11	2-7									11-0	4229.28	HB	T LW	
1w		A615/60 Black	#6	0	1	12	2		3-3											3-3	117.16	ST	Top Addl	
1x		A615/60 Black	#6	0	1	12	2		4-11											4-11	177.36	ST	Top Addl	
1y	BP(18"X3'-0"X3'-0")	A615/60 Black	#8	S3	1	2	12	0-11	2-7	2-10	2-7									8-11	571.59	HB	T SW	
1z		A615/60 Black	#8	S3	1	2	12	0-11	2-7	4-7	2-7									10-8	683.73	HB	T LW	
1aa		A615/60 Black	#6	0	1	2	2		2-10											2-10	17.00	ST	Top Addl	
1ab		A615/60 Black	#6	0	1	2	2		4-7											4-7	27.52	ST	Top Addl	
1ac	BP(24"X5'-0")@1A/SD5.20	A615/60 Black	#8	S3	1	2	12	0-11	2-7	3-4	2-7			0-11						10-4	661.95	HB	T SW	
1ad		A615/60 Black	#8	S3	1	2	12		2-7	6-4	2-7									11-6	736.92	HB	T LW	

Line	Mark	Grade	Bar Size	Shape	Layer	Multi	Qty	A	B	C	D	E	F	G	H	J	K	R	O	Total Length	Weight	Bend Type	Notes
1ae		A615/60 Black	#6	0	1	2	2		3-4											3-4	20.01	ST	Top Addl
1af		A615/60 Black	#6	0	1	2	2		6-4											6-4	38.03	ST	Top Addl
1ag	BP(24"X 5'-0")@1 B/SD5.20	A615/60 Black	#8	S3	1	5	14	0-11	2-7	3-4	2-7			0-11						10-4	1930.68	HB	T SW
1ah		A615/60 Black	#8	S3	1	5	14	0-11	2-7	6-4	2-7			0-11						13-4	2491.38	HB	T LW
1ai		A615/60 Black	#8	0	1	5	2		3-4											3-4	88.91	ST	Top Addl
1aj		A615/60 Black	#6	0	1	5	2		6-4											6-4	95.08	ST	Top Addl
1ak	BP(20"X4 '2")	A615/60 Black	#8	S3	1	3	12	0-11	2-7	3-0	2-7			0-11						10-0	961.20	HB	T SW
1al		A615/60 Black	#8	S3	1	3	12	0-11	2-7	5-6	2-7			0-11						12-6	1201.50	ST	T LW
1am		A615/60 Black	#6	0	1	3	2		3-0											3-0	27.04	ST	Top Addl
1an		A615/60 Black	#6	0	1	3	2		6-4											6-4	57.05	ST	Top Addl
1ao	BP(20"X 5'-0")@1 A/SD5.0	A615/60 Black	#8	S3	1	10	12	0-11	2-7	3-0	2-7			0-11						10-0	3204.00	HB	T SW
1ap		A615/60 Black	#8	S3	1	10	12	0-11	2-7	3-10	2-7			0-11						10-10	3469.93	HB	T LW
1aq		A615/60 Black	#6	0	1	2	2		3-0											3-0	18.02	ST	Top Addl
1ar		A615/60 Black	#6	0	1	10	2		6-4											6-4	190.15	ST	Top Addl
1as	BP(18"X 2'-6")@1 /SD5.20	A615/60 Black	#8	S3	1	2	12	0-11	2-7	2-10	2-7			0-11						9-10	629.91	HB	T SW
1at		A615/60 Black	#8	S3	1	2	12	0-11	2-7	3-10	2-7			0-11						10-10	693.99	HB	T LW
1au		A615/60 Black	#6	0	1	2	2		2-10											2-10	17.00	ST	Top Addl
1av		A615/60 Black	#6	0	1	2	2		3-10											3-10	23.01	ST	Top Addl
1aw	BP(18"X 4'-2")@1 /SD5.20	A615/60 Black	#8	S3	1	3	12	0-11	2-7	2-10	2-7			0-11						9-10	944.86	HB	T SW
1ax		A615/60 Black	#8	S3	1	3	12	0-11	2-7	5-6	2-7			0-11						12-6	1201.50	HB	T LW
1ay		A615/60 Black	#6	0	1	3	2		2-10											2-10	25.50	ST	Top Addl
1az		A615/60 Black	#6	0	1	3	2		5-6											5-6	49.57	ST	Top Addl
1ba	BP(20"X3 '4")	A615/60 Black	#8	S3	1	2	12	0-11	4-7	3-0	4-7			0-11						14-0	897.12	HB	T SW
1bb		A615/60 Black	#8	S3	1	2	12	0-11	4-7	4-8	4-7			0-11						15-8	1004.13	HB	T LW
1bc		A615/60 Black	#6	0	1	2	2		3-0											3-0	18.02	ST	Top Addl
1bd		A615/60 Black	#6	0	1	2	2		4-8											4-8	28.06	ST	Top Addl
1be	BP(24"X3 '4")	A615/60 Black	#8	S3	1	2	12	0-11	2-7	3-4	2-7			0-11						10-4	661.95	HB	T SW
1bf		A615/60 Black	#8	S3	1	2	12	0-11	2-7	4-8	2-7			0-11						11-8	747.81	HB	T LW
1bg		A615/60 Black	#6	0	1	2	2		3-4											3-4	20.01	ST	Top Addl
1bh		A615/60 Black	#6	0	1	2	2		4-8											4-8	28.06	ST	Top Addl
1bi	F1(6'-0"X 6'-0"X1'-6")(6 LOC)	A615/60 Black	#6	0	2	6	6		5-6											5-6	594.79	ST	B EW
1bj	F1A(6'-0"X6'-0"X3'-0") (2 LOC)	A615/60 Black	#6	0	2	4	6		5-6											5-6	396.53	ST	T&B EW
1bk		A615/60 Black	#5	26	1	2	4		1-6	2-4.75	1-6	2-4.75	1-6							9-3.5	77.52	HB	Standee
1bl	F2(9'-6"X 9'-6"X2'-4") (130LOC)	A615/60 Black	#8	0	2	130	10		9-0											9-0	62478.00	ST	B EW
1bm	F2A(7'-0"X13'-0"X 5'-0") (20 LOC)	A615/60 Black	#8	0	2	20	13		6-6											6-6	9024.60	ST	T&B SW

Line	Mark	Grade	Bar Size	Shape	Layer	Multi	Qty	A	B	C	D	E	F	G	H	J	K	R	O	Total Length	Weight	Bend Type	Notes
1bn		A615/60 Black	#10	0	2	20	4		12-6											12-6	8606.00	ST	T&B LW
1bo	F3(9'-0"X 9'-0"X2'-2")(390 LOC)	A615/60 Black	#8	0	2	390	9		8-6											8-6	159318.90	ST	B EW
1bp	F3A(7'-0"X12'-0"X 5'-0") (22 LOC)	A615/60 Black	#8	0	2	22	12		6-6											6-6	9163.44	ST	T&B SW
1bq		A615/60 Black	#10	0	2	22	6		11-6											11-6	13063.91	ST	T&B LW
1br		A615/60 Black	#5	17	2	22	18		2-7	4-6	2-7									9-8	7987.96	HB	U Bar
1bs	F3B(7'-0"X12'-0"X 3'-0") (12 LOC)	A615/60 Black	#8	0	2	12	12		6-6											6-6	4998.24	ST	T&B SW
1bt		A615/60 Black	#9	0	2	12	6		11-6											11-6	5630.40	ST	T&B LW
1bu		A615/60 Black	#5	26	1	12	6		1-6	2-4	1-6	2-4	1-6							9-2	688.63	HB	Stande
1bv	F3C(7'-0"X12'-0"X 3'-0") (28 LOC)	A615/60 Black	#8	0	2	28	12		6-6											6-6	11662.56	ST	T&B SW
1bw		A615/60 Black	#10	0	2	28	6		11-6											11-6	16626.79	ST	T&B LW
1bx		A615/60 Black	#5	26	1	28	6		1-6	2-3.75	1-6	2-3.75	1-6							9-1.5	1599.80	HB	Stande
1by	F4(9'-0"X 9'-0"X2'-4") (76 LOC)	A615/60 Black	#8	0	2	76	9		8-6											8-6	31046.76	ST	B EW
1bz	F4A(7'-0"X12'-0"X 3'-0") (4 LOC)	A615/60 Black	#8	0	2	4	12		6-6											6-6	1666.08	ST	T&B SW
1ca		A615/60 Black	#10	0	2	4	6		11-6											11-6	2375.26	ST	T&B LW
1cb		A615/60 Black	#5	26	1	4	6		1-6	2-3.75	1-6	2-3.75	1-6							9-1.5	228.54	HB	Stande
1cc	F4B(7'-0"X12'-0"X 3'-0") (3 LOC)	A615/60 Black	#8	0	2	3	12		6-6											6-6	1249.56	ST	T&B SW
1cd		A615/60 Black	#9	0	2	3	4		11-6											11-6	938.40	ST	T&B LW
1ce		A615/60 Black	#5	26	1	3	6		1-6	2-4	1-6	2-4	1-6							9-2	172.16	HB	Stande
1cf	F5(8'-6"X 8'-6"X2'-0") (72 LOC)	A615/60 Black	#8	0	2	72	8		8-0											8-0	24606.72	ST	B EW
1cg	F5A(7'-0"X11'-0"X 3'-0") (3 LOC)	A615/60 Black	#8	0	2	3	11		6-6											6-6	1145.43	ST	T&B SW
1ch		A615/60 Black	#10	0	2	3	6		10-6											10-6	1626.53	ST	T&B LW
1ci		A615/60 Black	#5	26	1	3	6		1-6	2-3.75	1-6	2-3.75	1-6							9-1.5	171.41	HB	Stande
1cj	F5B(7'-0"X11'-0"X 3'-0") (5 LOC)	A615/60 Black	#8	0	2	5	11		6-6											6-6	1909.05	ST	T&B SW
1ck		A615/60 Black	#10	0	2	5	4		10-6											10-6	1807.26	ST	T&B LW
1cl		A615/60 Black	#5	26	1	5	6		1-6	2-3.75	1-6	2-3.75	1-6							9-1.5	285.68	HB	Stande
1cm	F6(6'-0"X 6'-0"X1'-6") (26 LOC)	A615/60 Black	#6	0	2	26	7		5-6											5-6	3007.00	ST	B EW
1cn	F6A(5'-0"X8'-0"X3'-0") (7 LOC)	A615/60 Black	#8	0	2	7	8		4-6											4-6	1345.68	ST	T&B SW
1co		A615/60 Black	#10	0	2	7	6		7-6											7-6	2710.89	ST	T&B LW
1cp		A615/60 Black	#5	26	1	7	4		1-6	2-3.75	1-6	2-3.75	1-6							9-1.5	266.63	HB	Stande
1cq	F7(7'-0"X 7'-0"X1'-6") (10 LOC)	A615/60 Black	#7	0	2	10	7		6-6											6-6	1860.04	ST	B EW
1cr	F7A(7'-0	A615/60	#8	0	2	3	7		6-6											6-6	728.91	ST	T&B SW

Line	Mark	Grade	Bar Size	Shape	Layer	Multi	Qty	A	B	C	D	E	F	G	H	J	K	R	O	Total Length	Weight	Bend Type	Notes
	"X7'-0"X3'-0"(3 LOC)	Black																					
1cs		A615/60 Black	#9	0	2	3	2		6-6											6-6	265.20	ST	T&B LW
1ct		A615/60 Black	#5	26	1	3	4		1-6	2-3.75	1-6	2-3.75	1-6							9-1.5	114.27	HB	Standee
1cu	F8(5'-6"X5'-6"X1'-6")(8 LOC)	A615/60 Black	#6	0	2	8	5		5-0											5-0	600.80	ST	B EW
1cv	F8A(5'-0"X7'-0"X3'-0")(1 LOC)	A615/60 Black	#8	0	2	1	7		4-6											4-6	168.21	ST	T&B SW
1cw		A615/60 Black	#10	0	2	1	5		6-6											6-6	279.70	ST	T&B LW
1cx		A615/60 Black	#5	26	1	1	6		1-6	2-3.75	1-6	2-3.75	1-6							9-1.5	57.14	HB	Standee
1cy	F9(7'-0"X7'-0"X1'-10")(3 LOC)	A615/60 Black	#7	0	2	3	8		6-6											6-6	637.73	ST	B EW
1cz	F10(8'-0"X8'-0"X2'-0")(8 LOC)	A615/60 Black	#8	0	2	8	7		7-6											7-6	2242.80	ST	B EW
1da	F12(5'-6"X10'-0"X2'-0")(1 LOC)	A615/60 Black	#8	0	2	1	10		5-0											5-0	267.00	ST	T&B SW
1db		A615/60 Black	#8	0	2	1	6		9-6											9-6	304.38	ST	T&B LW
1dc		A615/60 Black	#5	26	1	1	8		1-6	1-4	1-6	1-4	1-6							7-2	59.83	HB	Standee
1dd	F16(3'-0"X3'-0"X1'-6")(2 LOC)	A615/60 Black	#6	0	2	2	3		2-6											2-6	45.06	ST	B EW
1de	F18(3'-0"X9'-0"X1'-6")(1 LOC)	A615/60 Black	#6	0	2	1	10		2-6											2-6	75.10	ST	T&B SW
1df		A615/60 Black	#6	0	2	1	4		8-6											8-6	102.14	ST	T&B LW
1dg		A615/60 Black	#5	26	1	1	6		1-6	0-10.75	1-6	0-10.75	1-6							6-3.5	39.36	HB	Standee
1dh	F19(7'-2"X18'-0"X3'-0")(1 LOC)	A615/60 Black	#8	0	2	1	18		6-8											6-8	641.12	ST	T&B SW
1di		A615/60 Black	#8	0	2	1	7		17-6											17-6	654.15	ST	T&B LW
1dj		A615/60 Black	#5	26	1	1	10		1-6	2-4	1-6	2-4	1-6							9-2	95.64	HB	Standee
1dk	@F2A	A615/60 Black	#5	17	2	20	17		2-7	4-6	2-7									9-8	6858.35	HB	U Bar
102	Member :Pier / Pedestal							Level :Sub-Structure													Code :Takeoff Rebar		
2a	SEC 5/SD3.1	A615/60 Black	#9	2	1	7	8	1-7	5-6											7-1	1348.03	HB	D/V
2b	SIZE:2'-3" X 2'-3"	A615/60 Black	#4	T1	1	7	8	0-4.5	1-9	1-9	1-9	1-9		0-4.5						7-9	289.91	LB	Ties
2c		A615/60 Black	#4	T9	1	14	8	0-4.5	1-9					0-4.5						2-6	187.04	LB	Links
2d	SIZE(2'-6"X2'-0")	A615/60 Black	#8	2	1	2	10	1-4	5-10											7-2	382.88	HB	D/V
2e		A615/60 Black	#4	T1	1	2	12	0-4.5	2-0	1-6				0-4.5						4-3	68.14	LB	Ties
2f		A615/60 Black	#4	T9	1	4	12	0-4.5	1-6					0-4.5						2-3	72.14	LB	Ties
2g		A615/60 Black	#4	T9	1	2	12	0-4.5	2-0					0-4.5						2-9	44.09	LB	Links
2h	SIZE(3'-0" X 3'-9")	A615/60 Black	#8	2	1	14	20	1-4	5-6											6-10	5106.11	HB	D/V
2i		A615/60 Black	#3	T1	1	14	12	0-4	3-3	2-6	3-3	2-6		0-4						12-2	768.75	LB	Ties
2j		A615/60 Black	#3	T9	1	42	12	0-4	3-3					0-4						3-11	742.86	LB	Links
103	Member :Continuous Footing							Level :Sub-Structure													Code :Takeoff Rebar		
3a	Grid Along M B/W 1 To 26	A615/60 Black	#5	0	1	39	3		40-0											40-0	4881.24	ST	B Cont
3b		A615/60	#5	0	1	1	3		3-0											3-0	9.39	ST	B Cont

Line	Mark	Grade	Bar Size	Shape	Layer	Multi	Qty	A	B	C	D	E	F	G	H	J	K	R	O	Total Length	Weight	Bend Type	Notes
		Black																					
3c		A615/60 Black	#5	0	1	41	3		40-0											40-0	5131.56	ST	T Cont
3d		A615/60 Black	#5	2	1	2	752	0-10	2-6					0-10						4-2	6541.36	ST	T&B SW
3e	Grid Along A B/W 1 To 26	A615/60 Black	#5	0	1	39	3		40-0											40-0	4881.24	ST	B Cont
3f		A615/60 Black	#5	0	1	1	3		3-0											3-0	9.39	ST	B Cont
3g		A615/60 Black	#5	0	1	41	3		40-0											40-0	5131.56	ST	T Cont
3h		A615/60 Black	#5	2	1	2	752	0-10	2-6					0-10						4-2	6541.36	ST	T&B SW
3i	Grid Along 26 B/W M To A	A615/60 Black	#5	0	1	15	3		40-0											40-0	1877.40	ST	B Cont
3j		A615/60 Black	#5	0	1	1	3		11-0											11-0	34.42	ST	B Cont
3k		A615/60 Black	#5	0	1	15	3		40-0											40-0	1877.40	ST	T Cont
3l		A615/60 Black	#5	0	1	1	3		22-3											22-3	69.62	ST	T Cont
3m		A615/60 Black	#5	2	1	2	286	0-10	2-6					0-10						4-2	2487.81	ST	T&B SW
3n	Grid Along 1 B/W A To M	A615/60 Black	#5	0	1	15	3		40-0											40-0	1877.40	ST	B Cont
3o		A615/60 Black	#5	0	1	1	3		11-0											11-0	34.42	ST	B Cont
3p		A615/60 Black	#5	0	1	15	3		40-0											40-0	1877.40	ST	T Cont
3q		A615/60 Black	#5	0	1	1	3		22-3											22-3	69.62	ST	T Cont
3r		A615/60 Black	#5	2	1	2	287	0-10	2-6					0-10						4-2	2496.50	ST	T&B SW
3s		A615/60 Black	#5	17	1	8	3		2-7	2-7										5-2	129.42	HB	Cor.
104	Member :Grade Beam							Level :Sub-Structure												Code :Takeoff Rebar			
4a	Grid Along K.5 B/W 23 To 20,	A615/60 Black	#10	2	4	2	6	1-10	55-3											57-1	11789.53	HB	T
4b	Grid Along K.5 B/W 16 To 13,	A615/60 Black	#10	0	4	3	6		38-6											38-6	11927.92	ST	T
4c	Grid Along A.3 B/W 13 To 16	A615/60 Black	#10	2	4	1	6	1-10	39-3											41-1	4242.41	ST	B
4d	& Grid Along A.3 B/W 20 To 23	A615/60 Black	#10	0	4	2	6		60-0											60-0	12392.64	ST	B
4e		A615/60 Black	#10	0	4	1	6		43-3											43-3	4466.51	ST	B
4f		A615/60 Black	#10	2	4	1	6	1-10	16-0											17-10	1841.34	HB	B
4g		A615/60 Black	#4	S3	4	1	226	0-4.5	2-6	2-8	2-6			0-4.5	0-3					8-5	5084.60	LB	Stirr.
4h		A615/60 Black	#4	T9	4	1	226	0-4.5	2-8					0-4.5						3-5	2065.24	LB	Stirr.
4i		A615/60 Black	#4	T9	4	1	226	0-4.5	2-6					0-4.5						3-3	1962.58	LB	Links
4j		A615/60 Black	#10	0	4	14	11		26-0											26-0	68916.85	ST	T&B Add'l
4k		A615/60 Black	#4	S3	4	1	226	0-4.5	2-6	2-2	2-6			0-4.5	0-3					7-11	4782.67	LB	Stirr.
4l		A615/60 Black	#4	S3	4	1	226	0-4.5	2-6	1-8	2-6			0-4.5	0-3					7-5	4480.73	LB	Stirr.
4m		A615/60 Black	#5	2	4	2	2	0-10	22-9											23-7	393.50	HB	SF EF
4n		A615/60 Black	#5	0	4	10	2		33-6											33-6	2795.24	HB	SF EF
4o	Grid Along 11 B/W	A615/60 Black	#10	2	1	1	9	1-10	48-0											49-10	1929.77	HB	T

Line	Mark	Grade	Bar Size	Shape	Layer	Multi	Qty	A	B	C	D	E	F	G	H	J	K	R	O	Total Length	Weight	Bend Type	Notes
	A To L																						
4p		A615/60 Black	#10	0	1	9	9		58-6											58-6	20389.77	ST	T
4q		A615/60 Black	#10	2	1	1	9	1-10	19-6											21-4	826.05	HB	T
4r		A615/60 Black	#10	2	1	1	9	1-10	58-2											60-0	2323.62	HB	B
4s		A615/60 Black	#10	0	1	6	9		60-0											60-0	13941.72	ST	B
4t		A615/60 Black	#10	0	1	1	9		48-0											48-0	1858.90	ST	B
4u		A615/60 Black	#10	0	1	1	9		53-3											53-3	2062.21	ST	B
4v		A615/60 Black	#10	2	1	1	9	1-10	46-3											48-1	1861.99	HB	B
4w		A615/60 Black	#4	S3	1	1	523	0-4.5	4-6	4-2	4-6			0-4.5	0-3					13-11	4863.15	LB	Stirr.
4x		A615/60 Black	#4	S3	1	1	523	0-4.5	4-6	3-8	4-6			0-4.5	0-3					13-5	4688.46	LB	Stirr.
4y		A615/60 Black	#4	S3	1	1	523	0-4.5	4-6	4-8	4-6			0-4.5	0-3					14-5	5037.83	LB	Stirr.
4z		A615/60 Black	#4	T9	1	1	523	0-4.5	4-8					0-4.5						5-5	1893.55	LB	Stirr.
4aa		A615/60 Black	#4	T9	1	1	523	0-4.5	4-6					0-4.5						5-3	1834.16	LB	Links
4ab		A615/60 Black	#5	0	1	32	4		40-0											40-0	5340.16	ST	SF EF
4ac		A615/60 Black	#10	0	1	18	7		18-0											18-0	9759.20	ST	T&B Add'l
4ad	Grid Along 18 B/W A To L	A615/60 Black	#10	2	1	1	8	1-10	48-0											49-10	1715.35	HB	T
4ae		A615/60 Black	#10	0	1	8	9		58-6											58-6	18124.24	ST	T
4af		A615/60 Black	#10	2	1	1	8	1-10	19-6											21-4	734.26	HB	T
4ag		A615/60 Black	#10	2	1	1	8	1-10	58-2											60-0	2065.44	HB	B
4ah		A615/60 Black	#10	0	1	6	8		60-0											60-0	12392.64	ST	B
4ai		A615/60 Black	#10	0	1	1	8		48-0											48-0	1652.35	ST	B
4aj		A615/60 Black	#10	0	1	1	8		53-3											53-3	1833.08	ST	B
4ak		A615/60 Black	#10	2	1	1	8	1-10	46-3											48-1	1655.11	HB	B
4al		A615/60 Black	#4	S3	1	1	523	0-4.5	4-6	4-2	4-6			0-4.5	0-3					13-11	4863.15	LB	Stirr.
4am		A615/60 Black	#4	S3	1	1	523	0-4.5	4-6	3-8	4-6			0-4.5	0-3					13-5	4688.46	LB	Stirr.
4an		A615/60 Black	#4	S3	1	1	523	0-4.5	4-6	4-8	4-6			0-4.5	0-3					14-5	5037.83	LB	Stirr.
4ao		A615/60 Black	#4	T9	1	1	523	0-4.5	4-8					0-4.5						5-5	1893.55	LB	Stirr.
4ap		A615/60 Black	#4	T9	1	1	523	0-4.5	4-6					0-4.5						5-3	1834.16	LB	Links
4aq		A615/60 Black	#5	0	1	32	4		40-0											40-0	5340.16	ST	SF EF
4ar		A615/60 Black	#10	0	1	18	6		18-0											18-0	8365.03	ST	T&B Add'l
4as	SD-5.5	A615/60 Black	#9	0	2	2	4		60-0											60-0	3264.00	ST	T&B Cont
4at	GRID LINE "24.5" @A	A615/60 Black	#9	0	1	1	4		21-10											21-10	296.89	ST	B Cont
4au		A615/60 Black	#9	0	1	1	4		25-4											25-4	344.49	ST	T Cont
4av		A615/60 Black	#5	0	1	2	6		40-0											40-0	500.64	ST	SF EF
4aw		A615/60 Black	#5	0	1	2	2		20-3											20-3	84.48	ST	SF EF
4ax		A615/60 Black	#9	0	6	2	4		20-0											20-0	3264.00	ST	T&B Add'l
4ay		A615/60 Black	#4	0	6	2	6		2-6											2-6	120.24	ST	Add'l
4az		A615/60 Black	#4	S3	1	1	93	0-4.5	2-6	2-6	2-6			0-4.5						8-3	512.52	LB	Stirr.
4ba		A615/60 Black	#4	S3	1	1	93	0-4.5	2-6	1-1	2-6			0-4.5						6-10	424.31	LB	Stirr.



Line	Mark	Grade	Bar Size	Shape	Layer	Multi	Qty	A	B	C	D	E	F	G	H	J	K	R	O	Total Length	Weight	Bend Type	Notes
4bb		A615/60 Black	#4	T9	1	1	93	0-4.5	2-6					0-4.5						3-3	201.90	LB	Links
4bc	GRID LINE "9" @B	A615/60 Black	#9	0	1	2	6		46-6											46-6	1897.20	ST	T&B Cont
4bd		A615/60 Black	#5	0	1	2	2		40-0											40-0	166.88	ST	SF EF
4be		A615/60 Black	#5	0	1	2	2		10-0											10-0	41.72	ST	SF EF
4bf		A615/60 Black	#9	0	2	2	6		21-0											21-0	1713.60	ST	T&B Add'l
4bg		A615/60 Black	#4	0	2	2	7		2-6											2-6	46.76	ST	T&B Add'l
4bh		A615/60 Black	#4	S3	1	1	26	0-4.5	2-6	2-6	2-6			0-4.5						8-3	143.29	LB	Stirr.
4bi		A615/60 Black	#4	S3	1	1	26	0-4.5	2-6	1-8	2-6			0-4.5						7-5	128.87	LB	Stirr.
4bj		A615/60 Black	#4	S3	1	1	26	0-4.5	2-6	0-9	2-6			0-4.5						6-6	112.89	LB	Stirr.
4bk		A615/60 Black	#4	T9	1	1	26	0-4.5	2-6					0-4.5						3-3	56.45	LB	Links
4bl	GRID LINE "24.5" @C	A615/60 Black	#9	0	2	2	4		60-0											60-0	3264.00	ST	T&B Cont
4bm		A615/60 Black	#9	0	1	1	4		28-3											28-3	384.20	ST	B Cont
4bn		A615/60 Black	#9	0	1	1	4		31-9											31-9	431.80	ST	T Cont
4bo		A615/60 Black	#5	0	1	2	6		40-0											40-0	500.64	ST	SF EF
4bp		A615/60 Black	#5	0	1	2	2		26-6											26-6	110.56	ST	SF EF
4bq		A615/60 Black	#9	0	6	2	4		14-0											14-0	2284.80	ST	T&B Add'l
4br		A615/60 Black	#4	0	6	2	5		2-6											2-6	100.20	ST	T&B Add'l
4bs		A615/60 Black	#4	S3	1	1	103	0-4.5	2-6	2-6	2-6			0-4.5						8-3	567.63	LB	Stirr.
4bt		A615/60 Black	#4	S3	1	1	103	0-4.5	2-6	1-1	2-6			0-4.5						6-10	469.93	LB	Stirr.
4bu		A615/60 Black	#4	T9	1	1	103	0-4.5	2-6					0-4.5						3-3	223.61	LB	Links
4bv	GRID LINE "1.5" @D	A615/60 Black	#10	0	1	2	7		60-0											60-0	3614.52	ST	T&B Cont
4bw		A615/60 Black	#10	0	1	1	7		55-3											55-3	1664.19	ST	B Cont
4bx		A615/60 Black	#10	0	1	1	7		57-0											57-0	1716.90	ST	T Cont
4by		A615/60 Black	#5	0	1	2	4		40-0											40-0	333.76	HB	SF EF
4bz		A615/60 Black	#5	0	1	2	2		35-3											35-3	147.06	ST	SF EF
4ca		A615/60 Black	#10	0	4	2	9		19-0											19-0	5886.50	ST	T&B Add'l
4cb		A615/60 Black	#4	0	4	2	6		2-6											2-6	80.16	ST	T&B Add'l
4cc		A615/60 Black	#4	S3	1	1	147	0-4.5	2-6	2-6	2-6			0-4.5						8-3	810.12	LB	Stirr.
4cd		A615/60 Black	#4	S3	1	1	147	0-4.5	2-6	1-10	2-6			0-4.5						7-7	744.33	LB	Stirr.
4ce		A615/60 Black	#4	S3	1	1	147	0-4.5	2-6	1-1	2-6			0-4.5						6-10	670.68	LB	Stirr.
4cf		A615/60 Black	#4	T9	1	2	147	0-4.5	2-6					0-4.5						3-3	638.27	LB	Links
4cg	GRID LINE "1.5" @E	A615/60 Black	#10	0	2	2	7		60-0											60-0	7229.04	ST	T&B Cont
4ch		A615/60 Black	#10	0	1	1	7		53-9											53-9	1619.00	ST	B Cont
4ci		A615/60 Black	#10	0	1	1	7		57-6											57-6	1731.96	ST	T Cont
4cj		A615/60 Black	#5	0	4	2	2		40-0											40-0	667.52	ST	SF EF
4ck		A615/60 Black	#5	0	1	2	2		14-0											14-0	58.41	ST	SF EF
4cl		A615/60 Black	#10	0	4	2	4		28-0											28-0	3855.49	ST	T&B Add'l
4cm		A615/60 Black	#4	0	4	2	8		2-6											2-6	106.88	ST	T&B Add'l
4cn		A615/60	#4	S3	1	1	124	0-4.5	2-6	2-6	2-6			0-4.5						8-3	683.36	LB	Stirr.

Line	Mark	Grade	Bar Size	Shape	Layer	Multi	Qty	A	B	C	D	E	F	G	H	J	K	R	O	Total Length	Weight	Bend Type	Notes
		Black																					
4co		A615/60 Black	#4	S3	1	1	124	0-4.5	2-6	1-8	2-6			0-4.5						7-5	614.61	LB	Stirr.
4cp		A615/60 Black	#4	S3	1	1	124	0-4.5	2-6	0-9	2-6			0-4.5						6-6	538.41	LB	Stirr.
4cq		A615/60 Black	#4	T9	1	1	124	0-4.5	2-6					0-4.5						3-3	269.20	LB	Links
4cr	GRID LINE "6" @F	A615/60 Black	#9	0	1	2	4		46-6											46-6	1264.80	ST	T&B Cont
4cs		A615/60 Black	#5	0	1	2	2		40-0											40-0	166.88	ST	SF EF
4ct		A615/60 Black	#5	0	1	2	2		10-0											10-0	41.72	ST	SF EF
4cu		A615/60 Black	#9	0	2	2	2		21-0											21-0	571.20	ST	T&B Add'l
4cv		A615/60 Black	#4	0	2	2	7		2-6											2-6	46.76	ST	T&B Add'l
4cw		A615/60 Black	#4	S3	1	1	26	0-4.5	2-6	2-6	2-6			0-4.5						8-3	143.29	LB	Stirr.
4cx		A615/60 Black	#4	S3	1	1	26	0-4.5	2-6	1-1	2-6			0-4.5						6-10	118.62	LB	Stirr.
4cy		A615/60 Black	#4	T9	1	1	26	0-4.5	2-6					0-4.5						3-3	56.45	LB	Links
4cz	Grid (11 -10.5/ K -J.5)	A615/60 Black	#9	0	1	2	4		23-0											23-0	625.60	ST	T&B Cont
4da		A615/60 Black	#5	0	2	1	2		23-0											23-0	95.96	ST	SF EF
4db		A615/60 Black	#4	S3	1	1	16	0-4.5	2-6	4-8	2-6			0-4.5						10-5	111.37	LB	Ties
4dc		A615/60 Black	#4	S3	1	1	16	0-4.5	2-6	1-9	2-6			0-4.5						7-6	80.16	LB	Ties
4dd		A615/60 Black	#4	T9	1	1	16	0-4.5	4-8					0-4.5						5-5	57.93	LB	Links
4de	Grid (B.8/1.5 -2.5 & 4.5-5.5)	A615/60 Black	#10	0	1	4	7		37-3											37-3	4488.03	ST	B
4df		A615/60 Black	#10	0	6	2	10		22-0											22-0	11359.92	ST	T&B Add'l
4dg		A615/60 Black	#10	0	1	2	7		53-3											53-3	3207.89	ST	T
4dh		A615/60 Black	#10	0	1	2	7		23-3											23-3	1400.63	ST	T
4di		A615/60 Black	#5	0	2	2	2		50-6											50-6	421.37	ST	SF EF
4dj		A615/60 Black	#5	0	2	2	2		20-6											20-6	171.05	ST	SF EF
4dk		A615/60 Black	#4	S3	1	2	68	0-4.5	2-6	2-8	2-6			0-4.5						8-5	764.94	LB	Stirr.
4dl		A615/60 Black	#4	S3	1	2	68	0-4.5	2-6	1-9	2-6			0-4.5						7-6	681.36	LB	Stirr.
4dm		A615/60 Black	#4	0	1	2	68		2-6											2-6	227.12	LB	Stirr.
4dn		A615/60 Black	#4	T9	1	2	68	0-4.5	2-8					0-4.5						3-5	310.70	LB	Links
4do		A615/60 Black	#4	T9	1	2	68	0-4.5	2-6					0-4.5						3-3	295.26	LB	Links
4dp	Grid (L / 9-10 & 3-2)	A615/60 Black	#10	0	1	4	7		39-3											39-3	4729.00	ST	B
4dq		A615/60 Black	#10	0	6	2	10		22-0											22-0	11359.92	ST	Addl
4dr		A615/60 Black	#10	0	1	2	7		54-10											54-10	3303.07	ST	T
4ds		A615/60 Black	#10	0	1	2	7		25-6											25-6	1536.17	ST	T
4dt		A615/60 Black	#5	0	2	2	2		52-6											52-6	438.06	ST	SF EF
4du		A615/60 Black	#5	0	2	2	2		25-6											25-6	212.77	ST	SF EF
4dv		A615/60 Black	#4	S3	1	2	58	0-4.5	2-6	2-8	2-6			0-4.5						8-5	652.45	LB	Stirr.
4dw		A615/60 Black	#4	S3	1	2	58	0-4.5	2-6	1-9	2-6			0-4.5						7-6	581.16	LB	Stirr.
4dx		A615/60 Black	#4	S3	1	2	58	0-4.5	2-6	1-0	2-6			0-4.5						6-9	523.04	LB	Stirr.
4dy		A615/60 Black	#4	T9	1	2	58	0-4.5	2-8					0-4.5						3-5	265.01	LB	Links
4dz		A615/60 Black	#4	T9	1	2	58	0-4.5	2-6					0-4.5						3-3	251.84	LB	Links

Line	Mark	Grade	Bar Size	Shape	Layer	Multi	Qty	A	B	C	D	E	F	G	H	J	K	R	O	Total Length	Weight	Bend Type	Notes	
4ea	Grid (B.7/7 - 8)	A615/60 Black	#9	0	1	1	6		60-0											60-0	1224.00	ST	B	
4eb		A615/60 Black	#9	0	1	1	6		12-0											12-0	244.80	ST	B	
4ec		A615/60 Black	#9	0	1	1	6		60-0											60-0	1224.00	ST	T	
4ed		A615/60 Black	#9	0	1	1	6		13-9											13-9	280.50	ST	T	
4ee		A615/60 Black	#5	0	2	1	2		40-0											40-0	166.88	ST	SF EF	
4ef		A615/60 Black	#5	0	2	1	2		29-6											29-6	123.07	ST	SF EF	
4eg		A615/60 Black	#4	S3	1	1	36	0-4.5	2-6	4-8	2-8			0-4.5						10-7	254.43	LB	Stirr.	
4eh		A615/60 Black	#4	S3	1	1	36	0-4.5	2-6	2-10	2-6			0-4.5						8-7	206.33	LB	Stirr.	
4ei		A615/60 Black	#4	T9	1	1	36	0-4.5	4-8					0-4.5						5-5	130.34	LB	Links	
4ej		A615/60 Black	#4	S3	1	1	36	0-4.5	2-6	1-3	2-6			0-4.5						7-0	168.34	LB	Stirr.	
105	Member :Elevator Pit							Level :Sub-Structure													Code :Takeoff Rebar			
5a	Sheet - SD-1.1	A615/60 Black	#4	2	1	1	12	0-8	9-2					0-8						10-6	84.17	HB	LW	
5b		A615/60 Black	#4	2	1	1	14	0-8	8-1					0-8						9-5	88.10	HB	T SW	
5c		A615/60 Black	#4	0	1	1	12		9-2											9-2	73.51	ST	B LW	
5d		A615/60 Black	#4	0	1	1	14		8-1											8-1	75.56	ST	B SW	
5e		A615/60 Black	#4	26	1	1	9		1-6	0-5	1-2	0-5	1-6							5-0	30.06	HB	Standee	
5f		A615/60 Black	#4	17	1	2	21		3-7	1-0										4-7	128.50	HB	D/V	
5g		A615/60 Black	#4	0	1	2	4		8-7											8-7	45.85	ST	Hor.	
5h		A615/60 Black	#4	0	1	2	4		9-8											9-8	51.68	ST	Hor.	
5i		A615/60 Black	#4	17	1	1	19		2-9	2-0										4-9	60.29	HB	Slab Dwls	
5j		A615/60 Black	#4	17	1	4	4		2-0	2-0										4-0	42.75	HB	Cor EF	
5k		A615/60 Black	#4	0	1	2	1		9-8											9-8	12.92	ST	Cont	
5l		A615/60 Black	#4	0	1	2	1		8-7											8-7	11.46	ST	Cont	
5m		A615/60 Black	#4	31	1	1	11		1-8	1-3	1-8				0-6	1-2	4-5	4-5		4-7	33.65	HB	Step Bar	
5n		A615/60 Black	#4	20	1	1	6		1-6	2-0	1-6									5-0	20.04	HB	Step Bar	
5o		A615/60 Black	#4	0	1	2	3		4-0											4-0	16.03	ST	Hor.	
106	Member :Slab On Grade							Level :Sub-Structure													Code :Takeoff Rebar			
6a	7" THK slab	A615/60 Black	#3	0	1	38	416		40-0											40-0	237752.32	ST	LW	
6b		A615/60 Black	#3	0	1	1	416		30-0											30-0	4692.48	ST	LW	
6c		A615/60 Black	#3	0	1	14	1118		40-0											40-0	235406.08	ST	SW	
6d		A615/60 Black	#3	0	1	1	1118		15-6											15-6	6515.70	ST	SW	
6e		A615/60 Black	#4	0	1	1	994		12-3											12-3	8133.90	ST	Slab Dwls	
6f		A615/60 Black	#3	0	1	1	369		6-3											6-3	867.15	ST	Slab Dwls	
6g		A615/60 Black	#4	0	1	1	995		7-3											7-3	4818.78	ST	Slab Dwls	
6h		A615/60 Black	#4	0	1	1	368		7-3											7-3	1782.22	ST	Slab Dwls	
6i		A615/60 Black	#4	0	1	110	2		3-0											3-0	440.88	ST	Re-Ent	
6j	POUR STRIP	A615/60 Black	#4	0	1	39	8		40-0											40-0	8336.64	ST	LW	
6k		A615/60 Black	#4	0	1	1	8		19-9											19-9	105.54	ST	LW	
6l		A615/60 Black	#4	0	1	39	5		40-0											40-0	5210.40	ST	LW	
6m		A615/60 Black	#4	0	1	1	8		19-9											19-9	105.54	ST	LW	
6n		A615/60 Black	#4	0	1	14	4		40-0											40-0	1496.32	ST	SW	

Line	Mark	Grade	Bar Size	Shape	Layer	Multi	Qty	A	B	C	D	E	F	G	H	J	K	R	O	Total Length	Weight	Bend Type	Notes
6o		A615/60 Black	#4	0	1	1	4		37-6											37-6	100.20	ST	SW
6p		A615/60 Black	#4	0	1	14	5		40-0											40-0	1870.40	ST	SW
6q		A615/60 Black	#4	0	1	1	5		37-6											37-6	125.25	ST	SW
107	Member :2nd Floor Framing plan							Level :Super Structure												Code :Takeoff Rebar			
7a	Sec (7/SD6.0) & (12/SD6.1)	A615/60 Black	#5	0	1	74	2		40-0											40-0	6174.56	ST	Cont
7b		A615/60 Black	#3	0	1	1	3842		5-0											5-0	7222.96	ST	Dwls
7c	Sec (10/SD6.3)	A615/60 Black	#8	0	1	1	2		50-3											50-3	268.33	ST	Cont
7d	Sh.NOS-2.1	A615/60 Black	#6	0	1	1	1		50-3											50-3	75.48	ST	Cont
7e		A615/60 Black	#6	0	1	1	32		50-3											50-3	2415.22	ST	DRAG BAR
7f	Sh.NOS-2.2	A615/60 Black	#8	0	1	1	2		198-0											198-0	1057.32	ST	Cont
7g		A615/60 Black	#6	0	1	1	1		190-9											190-9	286.51	ST	Cont
7h		A615/60 Black	#6	0	1	1	181		25-9											25-9	7000.45	ST	DRAG BAR
7i	Sh.NOS-2.3	A615/60 Black	#8	0	1	1	2		198-0											198-0	1057.32	ST	Cont
7j		A615/60 Black	#6	0	1	1	1		190-9											190-9	286.51	ST	Cont
7k		A615/60 Black	#6	0	1	1	181		25-9											25-9	7000.45	ST	DRAG BAR
7l		A615/60 Black	#8	0	1	1	2		137-9											137-9	735.58	ST	Cont
7m		A615/60 Black	#6	0	1	1	1		133-0											133-0	199.77	ST	Cont
7n		A615/60 Black	#6	0	1	1	32		125-9											125-9	6044.05	ST	DRAG BAR
7o		A615/60 Black	#6	0	1	1	10		4-0											4-0	60.08	ST	DRAG DWLS
7p		A615/60 Black	#8	0	1	1	2		131-3											131-3	700.88	ST	Cont
7q		A615/60 Black	#6	0	1	1	1		126-6											126-6	190.00	ST	Cont
7r		A615/60 Black	#6	0	1	1	32		126-6											126-6	6080.10	ST	DRAG BAR
7s		A615/60 Black	#6	0	1	1	10		4-0											4-0	60.08	ST	DRAG BAR
7t	Sh.NOS-2.5	A615/60 Black	#8	0	1	1	2		192-9											192-9	1029.29	ST	Cont
7u		A615/60 Black	#6	0	1	1	1		190-0											190-0	285.38	ST	Cont
7v		A615/60 Black	#6	0	1	1	182		31-9											31-9	8679.31	ST	DRAG BAR
7w	Sh.NOS-2.6	A615/60 Black	#8	0	1	1	2		75-3											75-3	401.84	ST	Cont
7x		A615/60 Black	#6	0	1	1	1		76-3											76-3	114.53	ST	Cont
7y		A615/60 Black	#6	0	1	1	32		76-3											76-3	3664.88	ST	DRAG BAR
7z		A615/60 Black	#6	0	1	1	5		4-0											4-0	30.04	ST	DRAG DWLS
7aa	Sec (6/SD6.0)	A615/60 Black	#5	0	1	28	2		30-0											30-0	1752.24	ST	Cont
7ab		A615/60 Black	#4	0	1	2	470		5-0											5-0	3139.60	ST	Dwls
7ac	Sec (10/SD6.3)	A615/60 Black	#8	0	1	1	2		138-9											138-9	740.92	ST	Cont
7ad		A615/60 Black	#6	0	1	1	1		134-0											134-0	201.27	ST	Cont
7ae		A615/60 Black	#6	0	1	1	32		134-0											134-0	6440.58	ST	DRAG BAR
7af		A615/60 Black	#6	0	1	1	10		4-0											4-0	60.08	ST	DRAG DWLS
7ag	Sec (7/SD6.0) SH.NO S-2.1	A615/60 Black	#3	0	1	1	1202		5-0											5-0	2259.76	ST	Dwls
7ah	SH.NO S-2.2	A615/60 Black	#3	0	1	1	4500		5-0											5-0	8460.00	ST	Dwls
7ai	SH.NO S-2.3	A615/60 Black	#3	0	1	1	2713		5-0											5-0	5100.44	ST	Dwls

Line	Mark	Grade	Bar Size	Shape	Layer	Multi	Qty	A	B	C	D	E	F	G	H	J	K	R	O	Total Length	Weight	Bend Type	Notes
7aj	SH.NO S-2.4	A615/60 Black	#3	0	1	1	3635		5-0											5-0	6833.80	ST	Dwls
7ak	SH.NO S-2.5	A615/60 Black	#3	0	1	1	6061		5-0											5-0	11394.68	ST	Dwls
7al	SH.NO S-2.6	A615/60 Black	#3	0	1	1	1712		5-0											5-0	3218.56	ST	Dwls
7am		A615/60 Black	#3	0	1	4	2		4-0											4-0	12.03	ST	Re-Ent
7an	SH.NO (2/ S-2.1)	A615/60 Black	#5	0	1	8	2		29-6											29-6	492.30	ST	Cont
7ao		A615/60 Black	#3	0	1	8	46		5-0											5-0	691.84	ST	Dwls
108	<b>Member :3rd Floor Framing Plan</b>							<b>Level :Super Structure</b>												<b>Code :Takeoff Rebar</b>			
8a	Grid 1 to 7.5/L (Sec-8/ Sd-6.1)	A615/60 Black	#5	0	1	1	2		414-9											414-9	865.17	ST	Cont
8b		A615/60 Black	#3	0	1	1	583		5-0											5-0	1096.04	ST	Dwl
8c		A615/60 Black	#3	0	1	1	1		404-3											404-3	152.00	ST	Cont
8d	Grid 2 TO 3 / L (10/ SD-6.3)	A615/60 Black	#8	0	1	1	2		60-0											60-0	320.40	ST	Cont
8e		A615/60 Black	#6	0	1	1	1		60-0											60-0	90.12	ST	Cont
8f		A615/60 Black	#6	0	1	1	32		60-0											60-0	2883.84	ST	DRAG BAR
8g	Grid L TO F.5/1 (SEC11/ SD-6.2,1 2/ SD-6.1)	A615/60 Black	#5	0	1	1	2		241-0											241-0	502.73	ST	Cont
8h		A615/60 Black	#3	0	1	1	340		5-0											5-0	639.20	ST	Dwl
8i		A615/60 Black	#3	0	1	1	1		235-0											235-0	88.36	ST	Cont
8j	Grid L TO F.5 / 1 (10/ SD-6.3)	A615/60 Black	#8	0	1	1	2		162-0											162-0	865.08	ST	Cont
8k		A615/60 Black	#6	0	1	1	1		157-3											157-3	236.19	ST	Cont
8l		A615/60 Black	#6	0	1	1	151		30-0											30-0	6804.06	ST	DRAG BAR
8m	Grid 7.5 TO 11/L (SEC 8/ SD-6.1)	A615/60 Black	#5	0	1	1	2		224-0											224-0	467.26	ST	Cont
8n		A615/60 Black	#3	0	1	1	315		5-0											5-0	592.20	ST	Dwl
8o		A615/60 Black	#3	0	1	1	1		218-3											218-3	82.06	ST	Cont
8p	Grid 2 TO 3 / L (10/ SD-6.3)	A615/60 Black	#8	0	1	1	2		60-0											60-0	320.40	ST	Cont
8q		A615/60 Black	#6	0	1	1	1		60-0											60-0	90.12	ST	Cont
8r		A615/60 Black	#6	0	1	1	32		60-0											60-0	2883.84	ST	DRAG BAR
8s	Grid 11 TO 13/L (SEC 12/ SD-6.1)	A615/60 Black	#5	0	1	1	2		129-9											129-9	270.66	ST	Cont
8t		A615/60 Black	#3	0	1	1	182		5-0											5-0	342.16	ST	Dwl
8u		A615/60 Black	#3	0	1	1	1		126-6											126-6	47.56	ST	Cont
8v	Grid L TO F.5/11 (SEC 10/ SD-6.3)	A615/60 Black	#8	0	1	1	2		50-0											50-0	267.00	ST	Cont
8w		A615/60 Black	#6	0	1	1	1		50-0											50-0	75.10	ST	Cont
8x		A615/60 Black	#6	0	1	1	32		50-0											50-0	2403.20	ST	DRAG BAR
8y	Grid L TO F.5/11	A615/60 Black	#5	0	1	2	2		241-0											241-0	1005.45	ST	Cont

Line	Mark	Grade	Bar Size	Shape	Layer	Multi	Qty	A	B	C	D	E	F	G	H	J	K	R	O	Total Length	Weight	Bend Type	Notes
	(SEC 6/ SD-6.0)																						
8z		A615/60 Black	#4	0	1	2	227		5-0											5-0	1516.36	ST	Dwl
8aa	Grid L TO F.5/11 (SEC 10/ SD-6.3)	A615/60 Black	#8	0	1	1	2		25-0											25-0	133.50	ST	Cont
8ab		A615/60 Black	#6	0	1	1	1		25-0											25-0	37.55	ST	Cont
8ac		A615/60 Black	#6	0	1	1	26		29-0											29-0	1132.51	ST	DRAG BAR
8ad	Grid 13 TO 14.7/L (SEC12/ SD-6.1)	A615/60 Black	#5	0	1	1	2		110-6											110-6	230.50	ST	Cont
8ae		A615/60 Black	#3	0	1	1	157		5-0											5-0	295.16	ST	Dwl
8af		A615/60 Black	#3	0	1	1	1		107-9											107-9	40.51	ST	Cont
8ag		A615/60 Black	#5	0	1	2	2		61-6											61-6	256.58	ST	Cont
8ah		A615/60 Black	#3	0	1	2	90		5-0											5-0	338.40	ST	Dwl
8ai		A615/60 Black	#3	0	1	2	1		60-6											60-6	45.50	ST	Cont
8aj		A615/60 Black	#5	0	1	1	2		7-3											7-3	15.12	ST	Cont
8ak		A615/60 Black	#3	0	1	1	12		5-0											5-0	22.56	ST	Dwl
8al		A615/60 Black	#3	0	1	1	1		7-3											7-3	2.73	ST	Cont
8am	Grid 14.8 TO 18/L (SEC12/ SD-6.1)	A615/60 Black	#5	0	1	1	2		202-9											202-9	422.94	ST	Cont
8an		A615/60 Black	#3	0	1	1	287		5-0											5-0	539.56	ST	Dwl
8ao		A615/60 Black	#3	0	1	1	1		198-0											198-0	74.45	ST	Cont
8ap	Grid 13 TO 16/ K.5 (SEC 10/ SD-6.3)	A615/60 Black	#8	0	1	1	2		192-0											192-0	1025.28	ST	Cont
8aq		A615/60 Black	#6	0	1	1	1		187-3											187-3	281.25	ST	Cont
8ar		A615/60 Black	#6	0	1	1	181		31-3											31-3	8495.69	ST	DRAG BAR
8as	Grid K.5 TO H/18 (SEC10/ SD-6.3)	A615/60 Black	#8	0	1	1	2		137-0											137-0	731.58	ST	Cont
8at		A615/60 Black	#6	0	1	1	1		132-3											132-3	198.64	ST	Cont
8au		A615/60 Black	#6	0	1	1	30		132-3											132-3	5959.18	ST	DRAG BAR
8av		A615/60 Black	#6	0	1	2	5		5-0											5-0	75.10	ST	Dwl
8aw	Grid L TO F.5/18 (SEC 6/ SD6.0)	A615/60 Black	#5	0	1	2	2		241-0											241-0	1005.45	ST	Cont
8ax		A615/60 Black	#4	0	1	2	227		5-0											5-0	1516.36	ST	Dwl
8ay		A615/60 Black	#8	0	1	8	2		31-3											31-3	1335.00	ST	Cont
8az		A615/60 Black	#6	0	1	1	182		31-3											31-3	8542.62	ST	DRAG BAR
8ba		A615/60 Black	#6	0	1	1	160		40-0											40-0	9612.80	ST	DRAG BAR
8bb		A615/60 Black	#6	0	1	1	32		20-0											20-0	961.28	ST	Cont
8bc		A615/60 Black	#5	0	1	1	18		40-0											40-0	750.96	ST	Cont
8bd		A615/60 Black	#5	0	1	1	2		2-0											2-0	4.17	ST	Cont
8be		A615/60 Black	#3	0	1	9	1		40-0											40-0	135.36	ST	Cont

Line	Mark	Grade	Bar Size	Shape	Layer	Multi	Qty	A	B	C	D	E	F	G	H	J	K	R	O	Total Length	Weight	Bend Type	Notes
8bf		A615/60 Black	#3	0	1	1	503		5-0											5-0	945.64	ST	Dwl
8bg		A615/60 Black	#3	0	1	2	91		5-0											5-0	342.16	ST	Dwl
8bh		A615/60 Black	#5	0	1	1	12		40-0											40-0	500.64	ST	Cont
8bi		A615/60 Black	#3	0	1	1	340		5-0											5-0	639.20	ST	Dwl
8bj		A615/60 Black	#3	0	1	6	1		40-0											40-0	90.24	ST	Cont
8bk	SEC 7/ SD-6.1	A615/60 Black	#3	0	1	1	30183		5-0											5-0	56744.04	ST	Dwl
8bl	sheet No,SD3. 5	A615/60 Black	#5	0	1	7	2		40-0											40-0	584.08	ST	Cont
8bm	SEC 8/ SD-6.0	A615/60 Black	#5	0	1	1	2		10-6											10-6	21.90	ST	Cont
8bn	Grid Along 24.5 B/ W A TO F.5	A615/60 Black	#3	0	1	7	1		40-0											40-0	105.28	ST	Cont
8bo		A615/60 Black	#3	0	1	1	1		2-3											2-3	0.85	ST	Cont
8bp	SEC 10/ SD-6.3	A615/60 Black	#8	0	1	4	2		60-0											60-0	1281.60	ST	Cont
8bq		A615/60 Black	#8	0	1	1	2		53-6											53-6	285.69	ST	Cont
8br		A615/60 Black	#6	0	1	1	32		60-0											60-0	2883.84	ST	Cont
8bs		A615/60 Black	#6	0	1	1	32		58-6											58-6	2811.74	ST	Cont
8bt		A615/60 Black	#6	0	1	1	1		4-0											4-0	6.01	ST	Cont
8bu		A615/60 Black	#3	0	1	1	404		5-0											5-0	759.52	ST	Dwls
8bv	Grid along A.3 TO A.6 B/W 24.5 TO 20	A615/60 Black	#5	0	1	7	2		40-0											40-0	584.08	ST	Cont
8bw		A615/60 Black	#5	0	1	1	2		11-9											11-9	24.51	ST	Cont
8bx		A615/60 Black	#5	0	1	1	2		11-9											11-9	24.51	ST	Cont
8by		A615/60 Black	#3	0	1	7	2		40-0											40-0	210.56	ST	Cont
8bz		A615/60 Black	#3	0	1	1	1		3-9											3-9	1.41	ST	Cont
8ca		A615/60 Black	#8	0	1	4	2		60-0											60-0	1281.60	ST	Cont
8cb		A615/60 Black	#8	0	1	1	1		54-9											54-9	146.18	ST	Cont
8cc		A615/60 Black	#6	0	1	1	175		32-0											32-0	8411.20	ST	Cont
8cd		A615/60 Black	#3	0	1	1	406		5-0											5-0	763.28	ST	Dwls
8ce	SH NO:3.6	A615/60 Black	#5	0	1	11	2		40-0											40-0	917.84	ST	Cont
8cf		A615/60 Black	#5	0	1	1	2		8-6											8-6	17.73	ST	Cont
8cg		A615/60 Black	#3	0	1	1	360		5-0											5-0	676.80	ST	Cont
8ch		A615/60 Black	#3	0	1	6	1		40-0											40-0	90.24	ST	Cont
8ci		A615/60 Black	#3	0	1	1	1		9-6											9-6	3.57	ST	Cont
8cj	SEC 10/ SD6.3	A615/60 Black	#8	0	1	3	2		60-0											60-0	961.20	ST	Cont
8ck		A615/60 Black	#8	0	1	1	2		15-6											15-6	82.77	ST	Cont
8cl		A615/60 Black	#6	0	1	3	2		60-0											60-0	540.72	ST	Cont
8cm		A615/60 Black	#6	0	1	1	1		9-3											9-3	13.89	ST	Cont
8cn		A615/60 Black	#6	0	1	1	180		31-0											31-0	8381.16	ST	Cont
8co	grid along 8 b/w A TO C.5	A615/60 Black	#8	0	1	4	4		60-0											60-0	2563.20	ST	Cont
8cp		A615/60	#8	0	1	1	4		9-9											9-9	104.13	ST	Cont

Line	Mark	Grade	Bar Size	Shape	Layer	Multi	Qty	A	B	C	D	E	F	G	H	J	K	R	O	Total Length	Weight	Bend Type	Notes		
		Black																							
8cq		A615/60 Black	#6	0	1	2	4		60-0											60-0	720.96	ST	Cont		
8cr		A615/60 Black	#6	0	1	1	2		9-9											9-9	29.29	ST	Cont		
8cs		A615/60 Black	#6	0	1	1	120		29-0											29-0	5226.96	ST	Cont		
8ct		A615/60 Black	#6	0	1	1	120		30-8											30-8	5527.96	ST	Cont		
8cu		A615/60 Black	#5	0	1	3	4		40-0											40-0	500.64	ST	Cont		
8cv		A615/60 Black	#5	0	1	1	4		31-9											31-9	132.46	ST	Cont		
8cw		A615/60 Black	#3	0	1	2	150		5-0											5-0	564.00	ST	Cont		
8cx	SH NO:3.7	A615/60 Black	#5	0	1	3	2		40-0											40-0	250.32	ST	Cont		
8cy		A615/60 Black	#5	0	1	1	2		8-6											8-6	17.73	ST	Cont		
8cz		A615/60 Black	#3	0	1	1	180		5-0											5-0	338.40	ST	Dwls		
8da		A615/60 Black	#6	0	1	4	1		60-0											60-0	360.48	ST	Cont		
8db		A615/60 Black	#6	0	1	1	1		16-9											16-9	25.16	ST	Cont		
8dc		A615/60 Black	#8	0	1	4	2		60-0											60-0	1281.60	ST	Cont		
8dd		A615/60 Black	#8	0	1	1	2		25-0											25-0	133.50	ST	Cont		
8de		A615/60 Black	#6	0	1	1	29		29-5											29-5	1281.48	ST	Cont		
8df		A615/60 Black	#5	0	1	3	3		40-0											40-0	375.48	ST	Cont		
8dg		A615/60 Black	#5	0	1	1	2		8-0											8-0	16.69	ST	Cont		
8dh	SH NO:3.8	A615/60 Black	#8	0	1	3	2		60-0											60-0	961.20	ST	Cont		
8di		A615/60 Black	#8	0	1	1	2		24-3											24-3	129.50	ST	Cont		
8dj		A615/60 Black	#6	0	1	3	1		60-0											60-0	270.36	ST	Cont		
8dk		A615/60 Black	#6	0	1	1	1		18-0											18-0	27.04	ST	Cont		
8dl		A615/60 Black	#6	0	1	1	190		30-0											30-0	8561.40	ST	Cont		
8dm	Scrubber dump	A615/60 Black	#5	0	1	3	2		31-3											31-3	195.56	ST	Cont		
8dn		A615/60 Black	#5	0	1	3	8		4-6											4-6	112.64	ST	CMU Dwls		
8do		A615/60 Black	#3	0	1	1	50		4-0											4-0	75.20	ST	Re-Ent		
8dp		A615/60 Black	#5	17	1	8	2		0-40	0-40										6-8	111.31	HB	Cor.		
8dq		A615/60 Black	#3	17	1	8	1		2-0	2-0										4-0	12.03	HB	Cor.		
8dr		A615/60 Black	#6	0	1	9	1		40-0											40-0	540.72	ST	Cont		
109	<b>Member :4th Floor Framing Plan</b>							<b>Level :Super Structure</b>														<b>Code :Takeoff Rebar</b>			
9a	Sec-12& 14/ SD-6.1	A615/60 Black	#5	0	1	88	2		40-0											40-0	7342.72	ST	Cont		
9b		A615/60 Black	#3	0	1	80	1		40-0											40-0	1203.20	ST	Cont		
9c		A615/60 Black	#3	0	1	1	4337		5-0											5-0	8153.56	ST	Dwls		
9d	Sec-10/ SD-6.3	A615/60 Black	#8	0	1	34	2		60-0											60-0	10893.60	ST	Cont		
9e		A615/60 Black	#6	0	1	32	1		60-0											60-0	2883.84	ST	Cont		
9f		A615/60 Black	#6	0	1	1	31		135-6											135-6	6309.15	ST	DRAG BAR		
9g		A615/60 Black	#6	0	1	3	31		126-3											126-3	17635.36	ST	DRAG BAR		
9h		A615/60 Black	#6	0	1	2	32		132-3											132-3	12712.93	ST	DRAG BAR		
9i		A615/60 Black	#6	0	1	1	32		82-9											82-9	3977.30	ST	DRAG BAR		
9j		A615/60 Black	#6	0	1	1	32		76-6											76-6	3676.90	ST	DRAG BAR		
9k		A615/60 Black	#6	0	1	1	182		31-3											31-3	8542.62	ST	DRAG BAR		



Line	Mark	Grade	Bar Size	Shape	Layer	Multi	Qty	A	B	C	D	E	F	G	H	J	K	R	O	Total Length	Weight	Bend Type	Notes
9l		A615/60 Black	#6	0	1	3	200		31-9											31-9	28613.10	ST	DRAG BAR
9m		A615/60 Black	#6	0	1	6	5		4-0											4-0	180.24	ST	DRAG DWLS
9n	Sec-6/SD-6.0	A615/60 Black	#5	0	1	28	2		40-0											40-0	2336.32	ST	Cont
9o		A615/60 Black	#4	0	1	2	481		5-0											5-0	3213.08	ST	Dwls
9p	Sec-7/SD-6.0	A615/60 Black	#3	0	1	27	760		5-0											5-0	38577.60	ST	Dwls
9q	Sec-2/SD-2.1	A615/60 Black	#5	0	5	1	2		36-9											36-9	383.30	ST	Cont
9r		A615/60 Black	#3	0	5	1	1		36-9											36-9	69.09	ST	T Cont
9s		A615/60 Black	#3	0	5	1	57		5-0											5-0	535.80	ST	Dwls
9t	Sec-7/SD-6.0	A615/60 Black	#3	0	5	1	12		5-0											5-0	112.80	ST	Dwls
9u	Re-entrant bar	A615/60 Black	#3	0	1	1	50		4-0											4-0	75.20	ST	Re-Ent
9v	Sec-7/SD-6.0	A615/60 Black	#3	0	1	1	81		5-0											5-0	152.28	ST	Dwls
110	<b>Member :2nd Floor Framing plan</b>							<b>Level :Super Structure</b>												<b>Code :Takeoff Rebar</b>			
10a		A615/60 Black	#4	0	1	1	1012		3-0											3-0	2028.05	ST	Male End
111	<b>Member :3rd Floor Framing Plan</b>							<b>Level :Super Structure</b>												<b>Code :Takeoff Rebar</b>			
11a		A615/60 Black	#4	0	1	1	1317		3-0											3-0	2639.27	ST	Male End
112	<b>Member :4th Floor Framing Plan</b>							<b>Level :Super Structure</b>												<b>Code :Takeoff Rebar</b>			
12a		A615/60 Black	#4	0	1	1	1080		3-0											3-0	2164.32	ST	Male End
113	<b>Member :Pier / Pedestal</b>							<b>Level :Sub-Structure</b>												<b>Code :Takeoff Rebar</b>			
13a	Headed Bars SEC 5/SD1.1	A615/60 Black	#7	17	1	14	6		3-0	1-0	3-0									7-0	1201.87	HB	U Bar
13b		A615/60 Black	#7	17	1	14	2		3-0	1-2	3-0									7-2	410.35	HB	U Bar

## Estimated Takeoff Accessories View

Line	Description	Size	Area	Unit	Lap	Total Area	Unit	No of sheet	Remark
107	<b>Member :2nd Floor Framing plan</b>			<b>Level :Super Structure</b>				<b>Code :Accessories</b>	
7a	4" X 4" - D14.0 X D14.0 WWF	7-0X20-0	101125	Sq.Ft	15	116293.75	Sq.Ft	831	15% Lap Added (Hatched Area)
7b	4" X 4" - D9.0 X D9.0 WWF	7-0X20-0	282425	Sq.Ft	15	324788.75	Sq.Ft	2320	15% Lap Added (Deck D1)
108	<b>Member :3rd Floor Framing Plan</b>			<b>Level :Super Structure</b>				<b>Code :Accessories</b>	
8a	4" X 4" - D9.0 X D9.0 WWF	7-0X20-0	461243	Sq.Ft	15	530429.45	Sq.Ft	3789	15% Lap Added (D1 & D2)
8b	4" X 4" - D10.0 X D10.0 WWF	7-0X20-0	19684	Sq.Ft	15	22636.6	Sq.Ft	162	15% Lap Added (Deck D3)
8c	4" X 4" - D14.0 X D14.0 WWF	7-0X20-0	160780	Sq.Ft	15	184897	Sq.Ft	1321	15% Lap Added (Hatched Area)
109	<b>Member :4th Floor Framing Plan</b>			<b>Level :Super Structure</b>				<b>Code :Accessories</b>	
9a	4" X 4" - D9.0 X D9.0 WWF	7-0X20-0	329145	Sq.Ft	15	378516.75	Sq.Ft	2704	15% Lap Added (D1 Slab Deck)
9b	4" X 4" - D14.0 X D14.0 WWF	7-0X20-0	104965	Sq.Ft	15	120709.75	Sq.Ft	862	15% Lap Added (Hatched Area)

## Estimated Weight Summary

Project Name : VGT1 855K AR

- Estimated Weight Summary By Member

- Rebar Weight Summary (Lbs)

Member : Isolated Footings

Rebar Coating : Black

Rebar Garde : A615/60

Line : 101

BarSize	Straight	Light	Heavy	Blank	Total Weight
#5	0.00	0.00	18702.92	0.00	18702.92
#6	7879.67	0.00	0.00	0.00	7879.67
#7	2497.77	0.00	0.00	0.00	2497.77
#8	325912.00	0.00	96878.93	0.00	422790.93
#9	6834.00	0.00	0.00	0.00	6834.00
#10	47096.34	0.00	0.00	0.00	47096.34
<b>Grade Total</b>	<b>390219.78</b>	<b>0.00</b>	<b>115581.85</b>	<b>0.00</b>	<b>505801.63</b>

Member : Pier / Pedestal

Rebar Coating : Black

Rebar Garde : A615/60

Line : 102

BarSize	Straight	Light	Heavy	Blank	Total Weight
#3	0.00	1511.61	0.00	0.00	1511.61
#4	0.00	661.32	0.00	0.00	661.32
#8	0.00	0.00	5488.99	0.00	5488.99
#9	0.00	0.00	1348.03	0.00	1348.03
<b>Grade Total</b>	<b>0.00</b>	<b>2172.93</b>	<b>6837.02</b>	<b>0.00</b>	<b>9009.95</b>

Member : Continuous Footing

Rebar Coating : Black

Rebar Garde : A615/60

Line : 103

BarSize	Straight	Light	Heavy	Blank	Total Weight
#5	45829.09	0.00	129.42	0.00	45958.51
<b>Grade Total</b>	<b>45829.09</b>	<b>0.00</b>	<b>129.42</b>	<b>0.00</b>	<b>45958.51</b>

Member : Grade Beam

Rebar Coating : Black

Rebar Garde : A615/60

Line : 104

BarSize	Straight	Light	Heavy	Blank	Total Weight
#4	501.00	68700.64	0.00	0.00	69201.64
#5	14795.99	0.00	3522.50	0.00	18318.49
#9	22579.88	0.00	0.00	0.00	22579.88
#10	261027.70	0.00	26742.46	0.00	287770.16
<b>Grade Total</b>	<b>298904.57</b>	<b>68700.64</b>	<b>30264.96</b>	<b>0.00</b>	<b>397870.17</b>

Member : Elevator Pit

Rebar Coating : Black

Rebar Garde : A615/60

Line : 105

BarSize	Straight	Light	Heavy	Blank	Total Weight
#4	287.01	0.00	487.56	0.00	774.57
<b>Grade Total</b>	<b>287.01</b>	<b>0.00</b>	<b>487.56</b>	<b>0.00</b>	<b>774.57</b>

Member : Slab On Grade

Rebar Coating : Black

Rebar Garde : A615/60

Line : 106

BarSize	Straight	Light	Heavy	Blank	Total Weight
#3	485233.73	0.00	0.00	0.00	485233.73

#4	32526.07	0.00	0.00	0.00	32526.07
<b>Grade Total</b>	<b>517759.80</b>	<b>0.00</b>	<b>0.00</b>	<b>0.00</b>	<b>517759.80</b>

Member : 2nd Floor Framing plan

Rebar Coating : Black

Rebar Garde : A615/60

Line : 107

BarSize	Straight	Light	Heavy	Blank	Total Weight
#3	45194.07	0.00	0.00	0.00	45194.07
#4	3139.60	0.00	0.00	0.00	3139.60
#5	8419.10	0.00	0.00	0.00	8419.10
#6	49174.77	0.00	0.00	0.00	49174.77
#8	5991.48	0.00	0.00	0.00	5991.48
<b>Grade Total</b>	<b>111919.02</b>	<b>0.00</b>	<b>0.00</b>	<b>0.00</b>	<b>111919.02</b>

Member : 3rd Floor Framing Plan

Rebar Coating : Black

Rebar Garde : A615/60

Line : 108

BarSize	Straight	Light	Heavy	Blank	Total Weight
#3	66884.20	0.00	12.03	0.00	66896.23
#4	3032.72	0.00	0.00	0.00	3032.72
#5	10073.80	0.00	111.31	0.00	10185.11
#6	96383.46	0.00	0.00	0.00	96383.46
#8	14210.41	0.00	0.00	0.00	14210.41
<b>Grade Total</b>	<b>190584.59</b>	<b>0.00</b>	<b>123.34</b>	<b>0.00</b>	<b>190707.93</b>

Member : 4th Floor Framing Plan

Rebar Coating : Black

Rebar Garde : A615/60

Line : 109

BarSize	Straight	Light	Heavy	Blank	Total Weight
#3	48879.53	0.00	0.00	0.00	48879.53
#4	3213.08	0.00	0.00	0.00	3213.08
#5	10062.34	0.00	0.00	0.00	10062.34
#6	84531.44	0.00	0.00	0.00	84531.44
#8	10893.60	0.00	0.00	0.00	10893.60
<b>Grade Total</b>	<b>157579.99</b>	<b>0.00</b>	<b>0.00</b>	<b>0.00</b>	<b>157579.99</b>

Member : 2nd Floor Framing plan

Rebar Coating : Black

Rebar Garde : A615/60

Line : 110

BarSize	Straight	Light	Heavy	Blank	Total Weight
#4	2028.05	0.00	0.00	0.00	2028.05
<b>Grade Total</b>	<b>2028.05</b>	<b>0.00</b>	<b>0.00</b>	<b>0.00</b>	<b>2028.05</b>

Member : 3rd Floor Framing Plan

Rebar Coating : Black

Rebar Garde : A615/60

Line : 111

BarSize	Straight	Light	Heavy	Blank	Total Weight
#4	2639.27	0.00	0.00	0.00	2639.27
<b>Grade Total</b>	<b>2639.27</b>	<b>0.00</b>	<b>0.00</b>	<b>0.00</b>	<b>2639.27</b>

Member : 4th Floor Framing Plan

Rebar Coating : Black

Rebar Garde : A615/60

Line : 112

BarSize	Straight	Light	Heavy	Blank	Total Weight
#4	2164.32	0.00	0.00	0.00	2164.32
<b>Grade Total</b>	<b>2164.32</b>	<b>0.00</b>	<b>0.00</b>	<b>0.00</b>	<b>2164.32</b>

Member : Pier / Pedestal

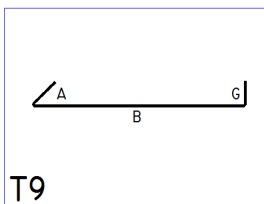
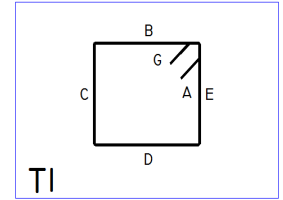
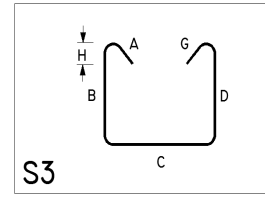
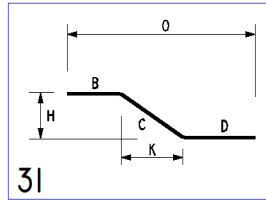
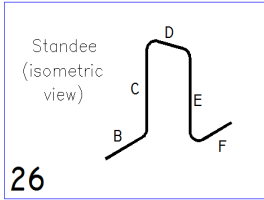
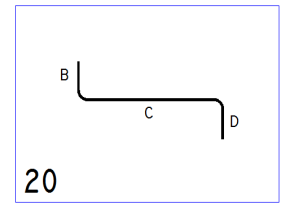
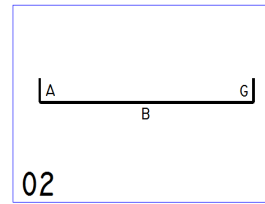
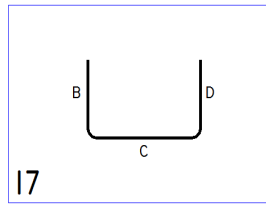
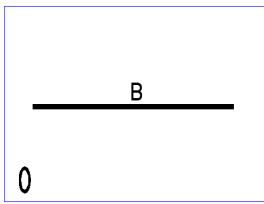
Rebar Coating : Black

Rebar Grade : A615/60

Line : 113

BarSize	Straight	Light	Heavy	Blank	Total Weight
#7	0.00	0.00	1612.22	0.00	1612.22
Grade Total	0.00	0.00	1612.22	0.00	1612.22

## Bend Shape Images



## Legend

Name	Description
D/V	Dowel/Vertical
Ties	Ties
Links	Links
T	Top
LW	Long Way
Cont	Continuous
B	Bottom
Stirr.	Stirrups
B Cont	Bottom Continuous
T Cont	Top Continuous
T&B SW	Top & Bottom Short Way
T&B Add'l	Top & Bottom Short Way
SF EF	Side Face Each Face
SW	Short Way
Slab Dwls	Slab Dowels
Re-Ent	Re-Enterant
Cor.	Corner
T SW	Top Shortway
B LW	Bottom Long Way
B SW	Bottom Short Way
Standee	Standee
T&B Cont	Top and Bottom Continuous
Addl	Additional
Hor.	Horizontal
Cor EF	Corner Each Face
Step Bar	Step Bar
Dwls	Dowels
DRAG BAR	DRAG BAR
DRAG DWLS	DRAG DWLS
T LW	Top Longway
Top Addl	Top Additional
Dwl	Dowel
B EW	Bottom Eachway
T&B EW	Top & Bottom Each Way
T&B LW	Top & Bottom Long Way

U Bar	U Bar
CMU Dwls	CMU Dowels
Male End	Male End
HB	Heavy Bend
LB	Light Bend
ST	Straight
TR	Rebar Takeoff